

# Documentary Filmmaking School

This project documents the socio culture life of portsaid through filmmaking.

The aim of it is how to symbolize portsaid's everyday life style with people's culture and community.

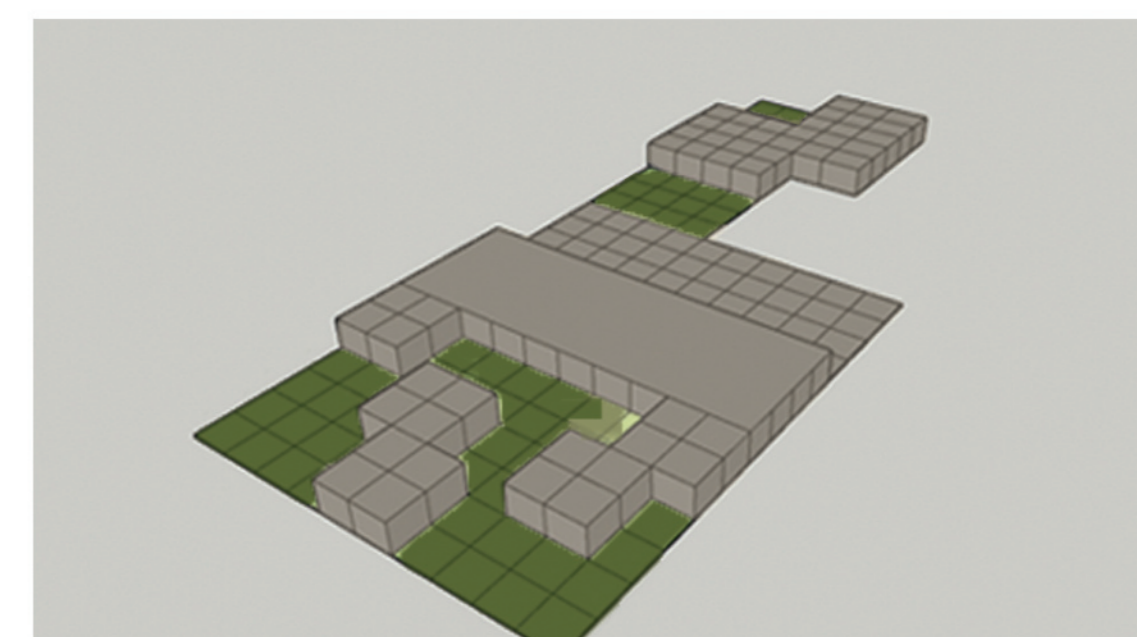
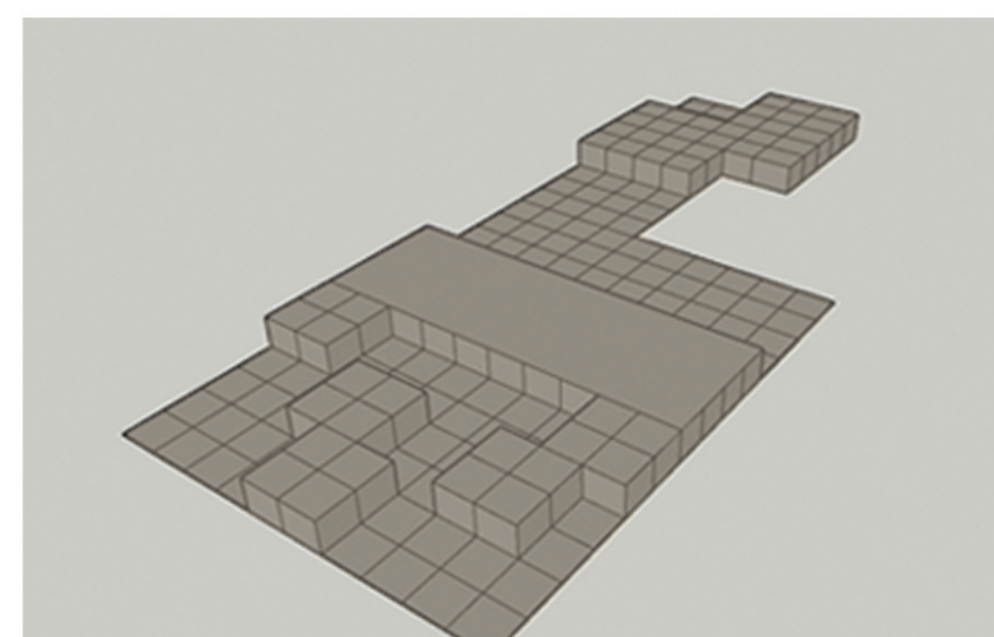
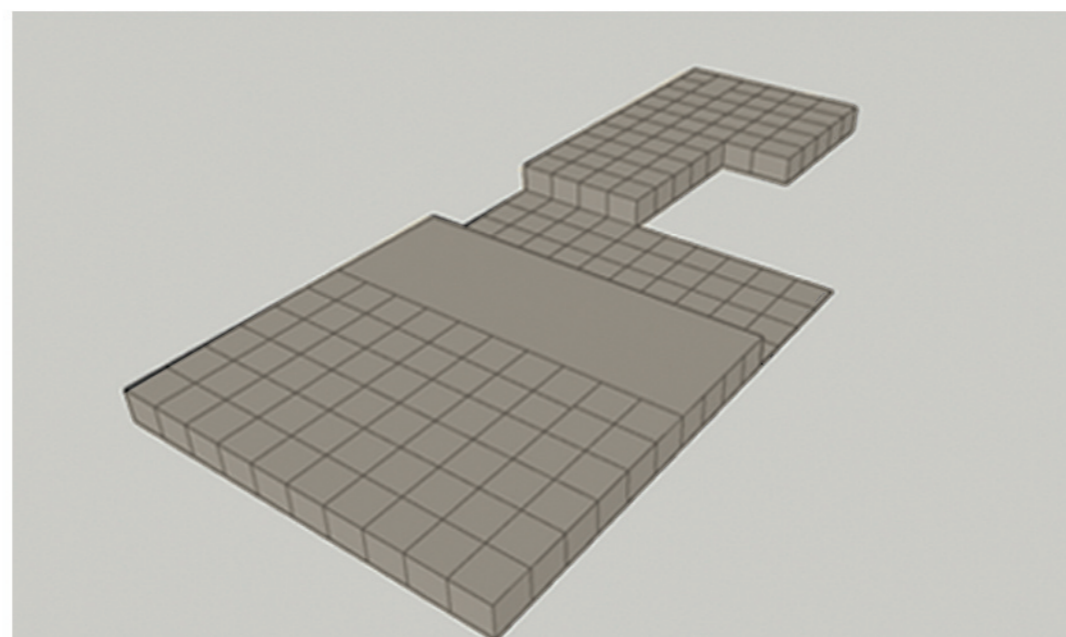
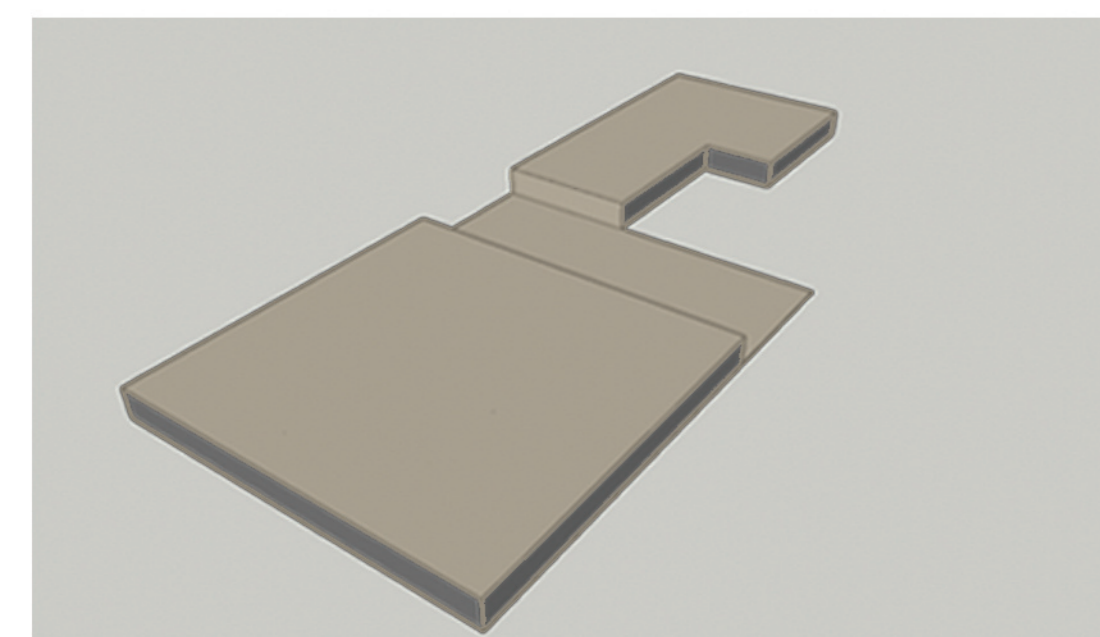


## Concept:

The building has two separate shapes , one of them represent what is missing in the area from open spaces and green areas but based on the grid which is the city is based upon and the other shape represents what are buildings are in the city. with wooden materials. The building starts to have open spaces in between its rooms as green spaces will be going through these areas and people would walk between them,as classes and studios would be open into each other .

## Form Generation

Here is show how the form has been generating and how it transformed into this shape as each figure shows how it developed to reach the current form:



- The building starts to take the shape of the land

-The building is divided into two different shapes,one that is based in a grid like the district and one does not.

-The part with the grid starts to have open spaces as it will have courts and pathways between them which represents what is missing in the district.

-The open spaces will have green areas as the district does not have also many green areas.

## Visuallization, Why this Project?



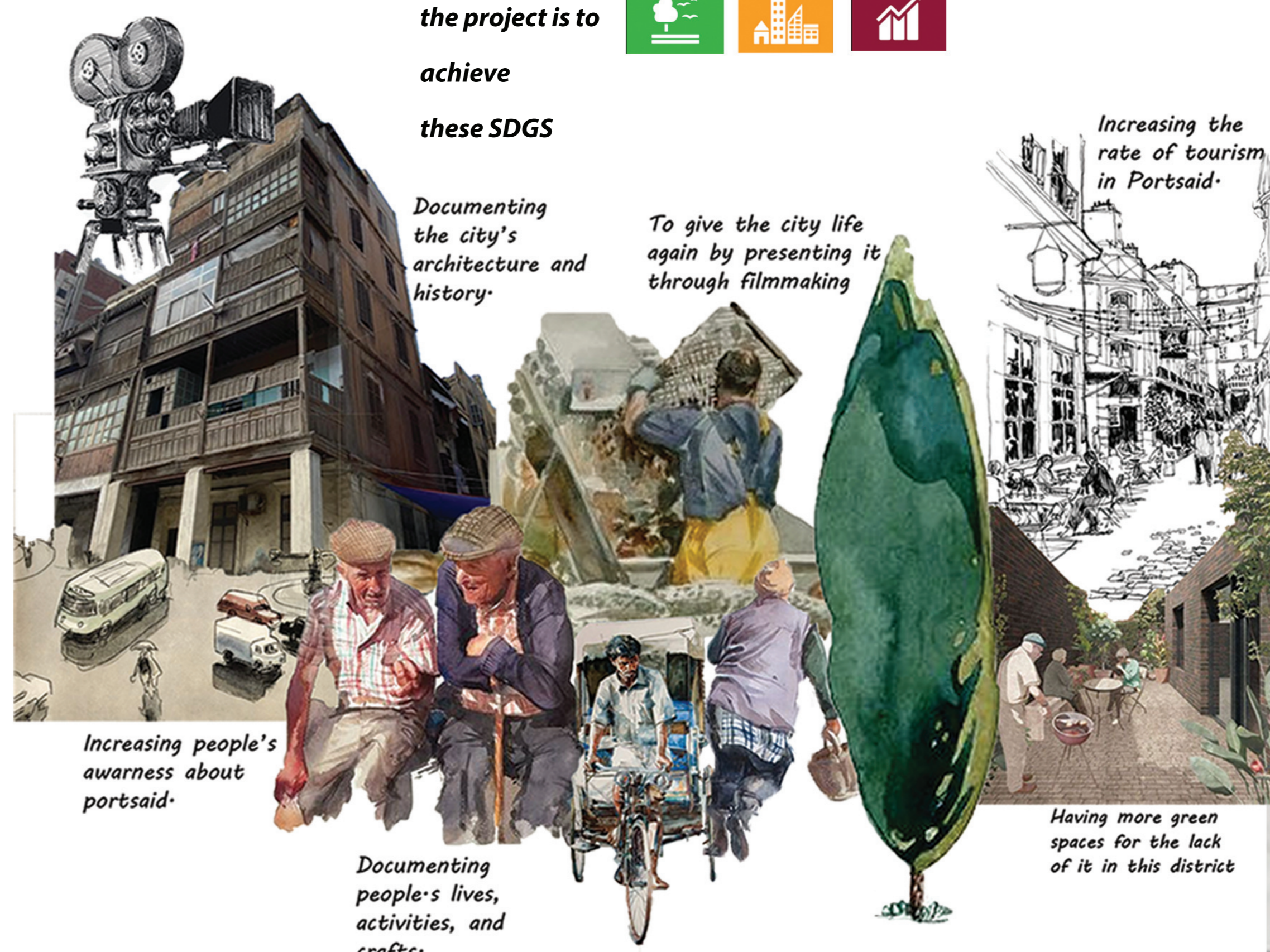
**The aim of the project is to achieve these SDGS**

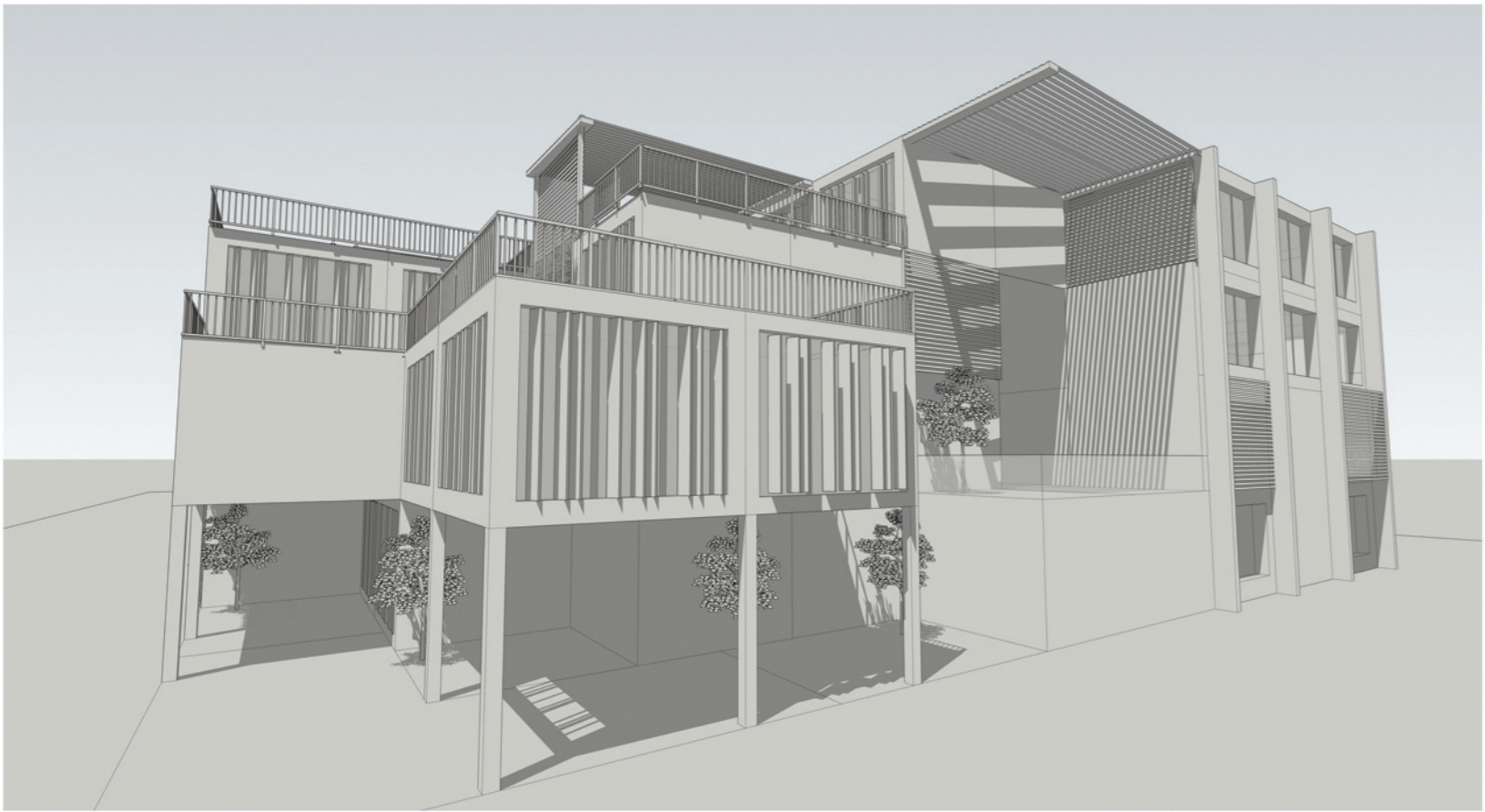
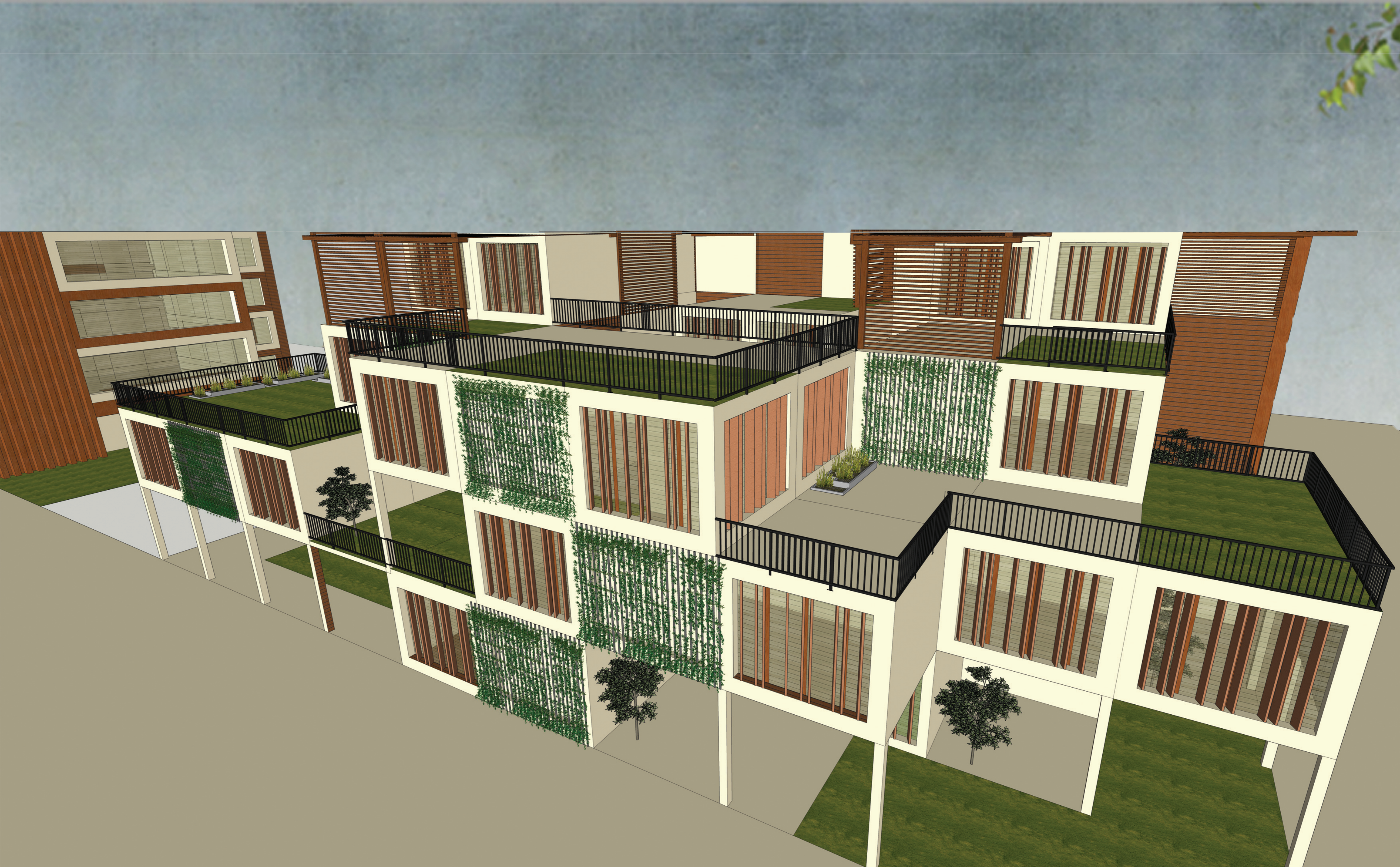


Documenting the city's architecture and history.

To give the city life again by presenting it through filmmaking

Increasing the rate of tourism in Portsaid.





**Concept:**

The building has two separate shapes ,here in this shape it show the difference between them as one of them represent what is missing in the area from open spaces and green areas but based on the grid which is the city is based upon and the other shape represents what are buildings are in the city. with wooden materials. The building starts to have open spaces in between its rooms as green spaces will be going through these areas and people would walk between them,as classes and studios would be open into each other .



Section Scale 1:100



Elevation



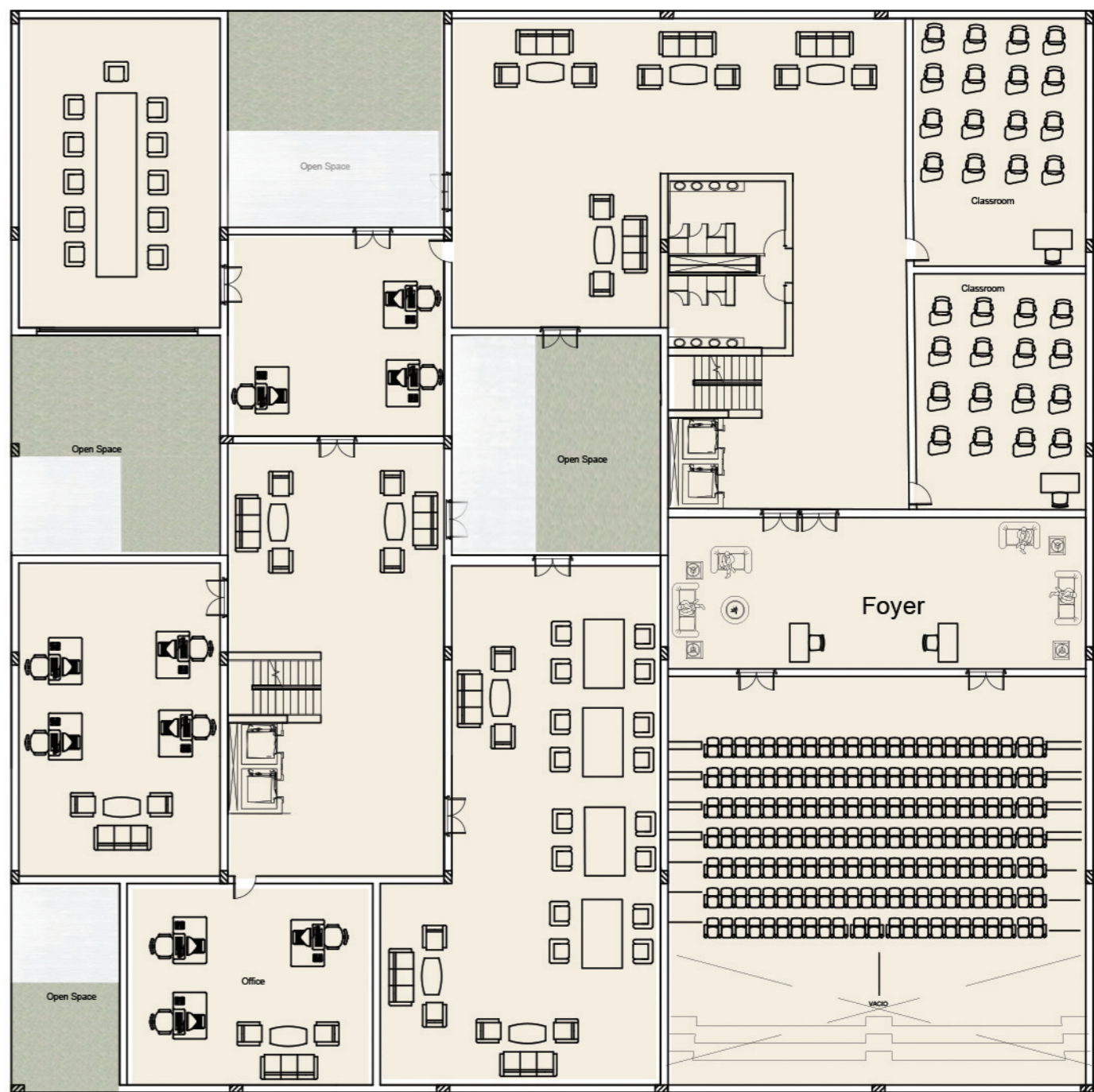
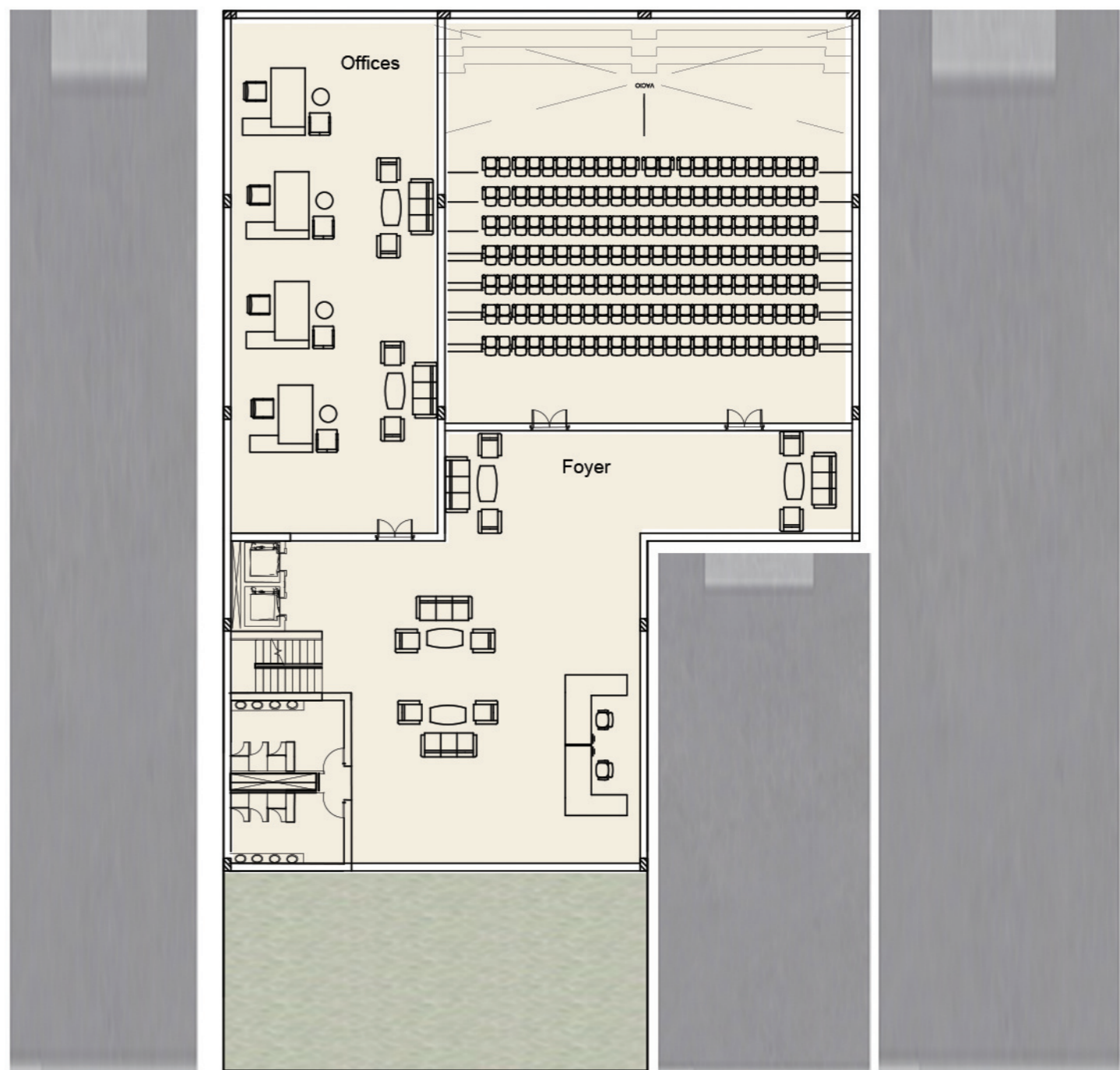
Elevation



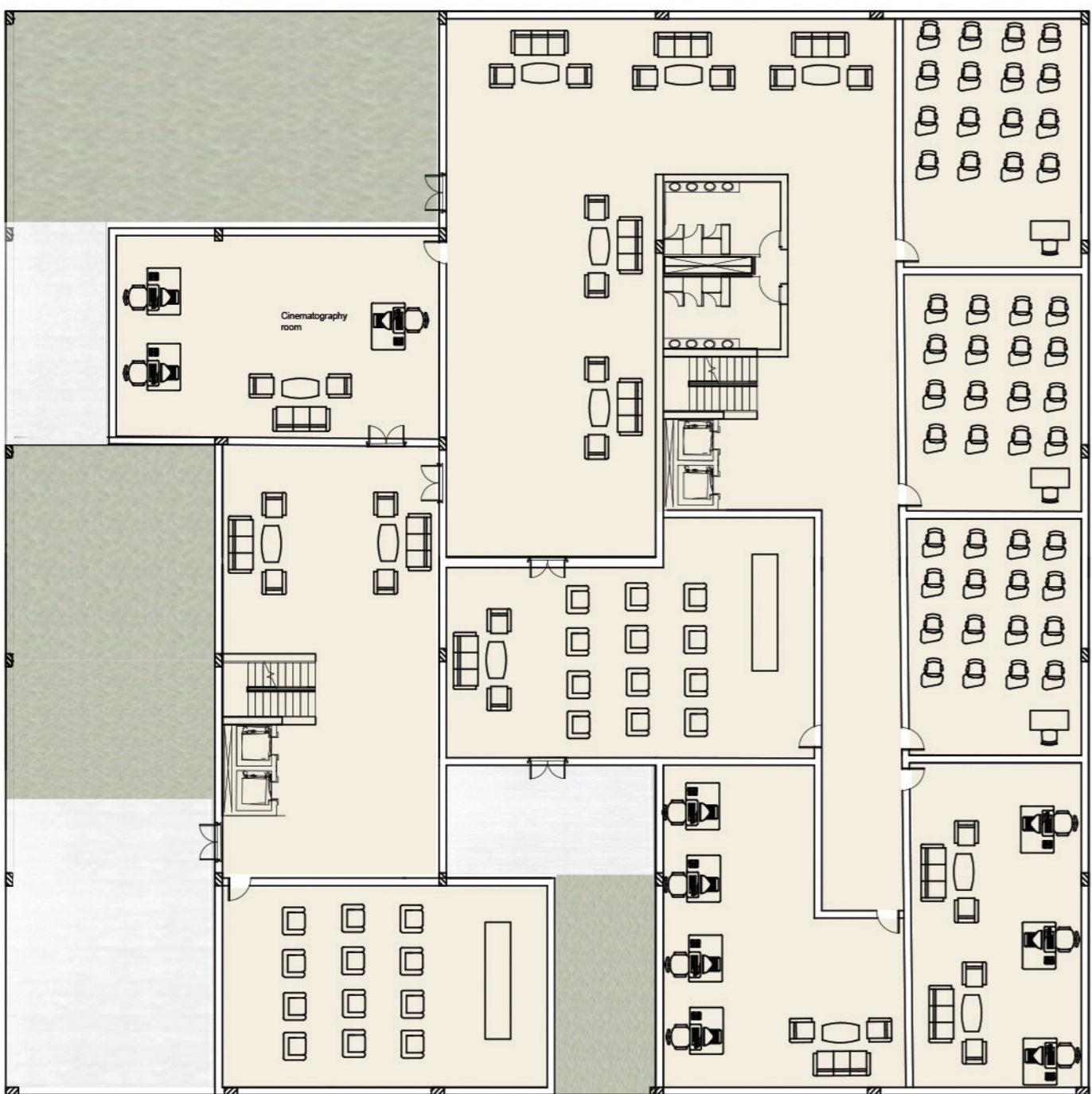
Ground Floor Plan1:200



First Floor Plan1:200



Second Floor Plan1:200



Third Floor Plan1:200

