



UNIVERSITY
OF LONDON
INTERNATIONAL
PROGRAMMES

Undergraduate courses in

Economics, Management, Finance and the Social Sciences 2016–2017

The World Class: studied
anywhere, valued everywhere.

londoninternational.ac.uk/lse

Academic direction by:



THE LONDON SCHOOL
OF ECONOMICS AND
POLITICAL SCIENCE ■

Join the World Class



1 A mark of excellence

Gain a degree from the University of London, a mark of excellence, respected worldwide since 1858.

2 Study without relocating

Study wherever you live and gain a prestigious qualification. With no travel, relocation or accommodation costs, studying through the University of London International Programmes is much more affordable than coming to London to study on campus.

3 Quality of learning

The programmes in this prospectus are developed by academics at LSE, a constituent College of the University of London and one of the world's leading social science universities.

4 Employability

Develop employment skills such as problem solving, analysis and self-motivation which are sought after by top employers worldwide.

5 Join the World Class

On graduation join our global community of influential alumni, from leaders in business and industry to Nobel prize winners.

An aerial photograph of the London skyline at sunset. The Shard, a tall, thin skyscraper with a glass facade, is the central focus, illuminated from within. To its left is The Gherkin, a curved building with a blue-tinted glass facade. The foreground shows a dense urban landscape with various buildings, including a prominent white building with a spire. A red crane is visible on the left side. The sky is a mix of orange, yellow, and blue, indicating the time is either dawn or dusk.

“In the increasingly competitive environment of worldwide access to higher education, the University of London International Programmes continue to offer a guarantee of quality, value and intellectual rigour.”

Professor Sir Adrian Smith FRS
Vice-Chancellor, University of London

Your prestigious University of London qualification



About your qualification

When you graduate with a degree, diploma or certificate from the University of London you will receive two important documents – your Final Diploma (the parchment you receive on graduation) and a Diploma Supplement.

The Final Diploma

- Indicates that you were registered with the University of London and awarded a University of London degree, diploma or certificate.
- Gives the name of the University of London College that developed the syllabus and provided assessment.
- Features the University of London crest and the Vice-Chancellor's signature.

The Diploma Supplement

- Describes the nature, level and content of programme you successfully completed.
- Includes the transcript of courses taken, marks achieved and overall classification.
- States the role of the London School of Economics and Political Science and the method of study.

Contents

Key dates

Application deadline for BSc and Graduate Diploma programmes:

1 October in the year before you intend to sit your examinations

Registration deadline for BSc and Graduate Diploma programmes:

30 November

Application deadline for the Certificate of Higher Education in Social Sciences:

You must apply directly to an institution with Certificate teaching status. Please contact them for their application deadline: londoninternational.ac.uk/teaching-institutions/teaching-institutions

Registration deadline for the Certificate of Higher Education in Social Sciences:

31 October

Study materials

Available soon after completing registration and payment

Examinations

May and June

A global reach with over 50,000 students spanning 180 countries worldwide

Introduction

Join the World Class	2
Your prestigious University of London qualification	4
A welcome from the programme team	6
Introduction to the awards	8
How you study	9
Support for your studies	10
The Student Portal	11
Fast track to professional accreditation	13
The route around our programmes	14

Programmes

BSc degrees	15
BSc Accounting and Finance	16
BSc Banking and Finance	18
BSc Business and Management	19
BSc Development and Economics	21
BSc Economics	22
BSc Economics and Finance	23
BSc Economics and Management	24
BSc Economics and Politics	25
BSc Information Systems and Management	26
BSc International Development	28
BSc International Relations	29
BSc Mathematics and Economics	31
BSc Politics and International Relations	32
Joint Laws programmes	34
BSc Accounting with Law	36
BSc Management with Law	37
Graduate Diplomas	38
Graduate Diploma structures	40
Certificate of Higher Education in Social Sciences (CHESS)	42

Reference section

Additional educational support	45
Selection groups	48
Application and registration process	51
Transfer	52
Fees	53
Further information	54

A welcome from the programme team

Welcome to a global programme

The University of London International Programmes was established in 1858 to give students around the world the opportunity to study with one of the most prestigious universities in the UK. This makes the University of London the world's oldest provider of degrees by distance and flexible learning.

As one of its 17 Colleges, the London School of Economics and Political Science (LSE), founded in 1895, has developed a global reputation as one of the world's preeminent institutions for the study of the social sciences. Its faculty are leading researchers and teachers in their fields, who are actively involved in policy issues with governments around the world, and with international organisations. LSE is committed to its Latin motto *rerum cognoscere causas*: to understand the causes of things. You can only find out the causes of things by asking questions – our programmes will help you to think about why things are the way they are. These programmes are academically demanding, however they can change your life in many ways and will positively impact your career prospects.

Studying on one of our programmes will encourage you to think critically and creatively and increase your understanding of how and why modern societies, institutions and economic systems function in the way they do. It can provide opportunity for further study at undergraduate and Masters level, and will also provide you with an excellent foundation for a wide variety of careers ranging from accounting, banking and information systems to the media, civil service and journalism.

How will I know if this is the right study programme for me?

Ask yourself these questions:

- Do I want to develop a questioning outlook and be critical of my own work?
- Do I want to link ideas from all the disciplines I study to create new ways of thinking about issues in the real world?
- Do I want the challenge of developing more than one way of thinking about the social world?
- Do I want to work cooperatively with others to share my ideas and learn how to develop this important skill for the world of work?

If you can answer 'yes' to all of the above then you are certainly someone who would enjoy studying one of these programmes.

Whatever stage you have reached in your education you can use the table on page 8 to see which study path and qualification is the right one for you.

We hope you enjoy looking through the programmes on offer and look forward to welcoming you.

LSE Office for the University of London International Programmes

LSE



LSE is one of the Colleges of the University of London and a world-leading social science institution. Academics from LSE provide the academic direction for the programmes listed in this prospectus.

Since its foundation in 1895, LSE has been regarded as an international centre of academic excellence and innovation in the social sciences. Its teaching and research is recognised worldwide as a benchmark of quality.

The School's academic profile spans the broad range of social sciences – disciplines that reflect how we interact with one another and with society.

Current areas of research and expertise include globalisation, human rights, risk and business management, new communications technologies, urban and regional policies, and new forms of governance.

LSE alumni and former staff include 16 Nobel prize winners and 37 past or present heads of state. LSE academics come from all over the world and from many social, educational and ethnic backgrounds. They are in constant demand as commentators and analysts in the media, act as advisors to governments, and are seconded to national and international organisations.

LSE alumni and former staff include 16 Nobel prize winners and 34 past or present heads of state. LSE academics come from all over the world and from many social, educational and ethnic backgrounds.



Introduction to the awards

Award/Level	Why consider this?	Courses	Cost [⌘]	Duration
If you do not currently meet the entrance requirements for our degrees				
Certificate of Higher Education in Social Sciences (FHEQ Level 4)	<p>If you can attend one of the teaching institutions with permission to teach the programme and you wish to:</p> <ul style="list-style-type: none"> • get on to the degree programme and may not meet the entrance requirements for the degree. • gain a stand-alone qualification that will admit you into the second year of the BSc programmes listed in this prospectus and degrees at many universities in the UK, USA and Australia. 	4	£1,656 [▲]	1–5 years
If you meet the entrance requirements for our degrees				
BSc Standard Route (FHEQ Level 6)	<ul style="list-style-type: none"> • To gain a world-class degree through flexible study. • If you have previously studied similar material to a comparable level and depth you can apply for accreditation of prior learning (APL) from up to four full 100 courses. 	12	£4,292–£4,486	3–8 years
Individual courses (FHEQ Level 4–6)	<p>If you wish to enhance your skills or professional knowledge, demonstrate your ability in a specific area (for example to a university or a professional body), or simply study certain subjects you have an interest in, you can apply to take individual courses. For more information on entrance requirements and fees, please see: londoninternational.ac.uk/distance-flexible-learning/individual-courses-modules/emfss</p>	1+	£414	1–2 years
If you already have a first degree (Bachelor's degree)				
BSc Graduate Entry Route (FHEQ Level 6)	<p>If you hold a full first degree and want a flexible way to gain a second degree, you may be able to complete a shorter than usual study programme (a minimum of two years for most degrees).</p>	9	£3,240–£3,314	2–8 years [†]
Graduate Diplomas (FHEQ Level 6)	<p>If you hold a full first degree in any discipline but, for professional or personal reasons, wish to secure a stand-alone qualification in a named discipline in the fields of Economics, Management, Finance and the Social Sciences. You may also use the diploma as a basis for progression into postgraduate study in a related area.</p>	4	£1,556	1–5 years

Entrance requirements for:

Certificate of Higher Education in Social Sciences see page 42

BSc degrees (Standard and Graduate Entry Route) see page 15

Graduate Diplomas see page 39

There are many other qualifications, from the UK and overseas, that the University accepts as satisfying the entrance requirements.

[⌘] Fees are subject to annual revision and typically may be increased by up to 5% per annum. The full list of annual fees for the programmes will be published on the Student Fees web page once confirmed, please visit: londoninternational.ac.uk/fees

[▲] Certificate of Higher Education in Social Sciences (CHESS) students will need to pay fees to a local institution. If you choose to attend an institution while studying for other awards you will need to pay their fees in addition to University of London fees. If you successfully complete the CHESS you can transfer to, and complete, a BSc degree in a further two years paying continuing registration fees. You will need to pay additional fees.

[†] The BSc Development and Economics, BSc Economics and Finance, BSc Economics and Politics, and BSc Information Systems and Management have a three-year minimum registration period.

How you study

Am I ready to study?

A University of London qualification is highly regarded worldwide. Given the academic rigour of our programmes, to achieve good results requires a high degree of self-motivation. But your hard work will be worth it in the end, as you will join an expanding community of alumni with excellent career prospects.

Am I eligible?

You can take advantage of the wide range of entry points, including a fast track route for those who already hold a degree. If you are not eligible for the degree, you may be eligible for the Certificate of Higher Education in Social Sciences (please see page 42).

Flexible study

You can manage your studies to fit in with your own schedule. As a guide, you should dedicate at least 35 hours per week for approximately 34 weeks of the year if you intend to complete the maximum of four courses in any one year.

Our programmes provide an opportunity to obtain a prestigious qualification at a reasonable cost. You can choose to

study independently or pay for face-to-face tuition at a local institution, where available. Please note that students taking the Certificate of Higher Education in Social Sciences must attend an institution with Certificate teaching status (please see the list on pages 45–47).

Study materials

Your study materials are available through the Student Portal and are specially written by academics appointed by LSE. The cost of your study pack is included in your initial and continuing registration fees. Materials include:

- The Student guide to the International Programmes and the Programme handbook, containing information about examinations, University contacts and important dates.
- *Strategies for success*, with information about study techniques, making the best use of resources and preparing for examinations.
- Subject guides for each course studied.
- Past examination papers and *Examiners' commentaries*.
- Regulations containing full details of syllabuses, programme structures and degree classification criteria.

Books

You will need to purchase your own books. We ensure all key books are widely available either from internet bookshops or by mail order. For more information see: londoninternational.ac.uk/booksonline

Study support

The University does not provide personal tuition to International Programmes students, although staff can help you with administrative queries. If you have any questions of an academic nature you will be able to contact the LSE office, but please remember (especially if you intend to study independently) that LSE staff cannot engage in active or regular contact or tuition. You can choose to pay for additional educational support at a local independent institution, please see pages 45–47.

Examinations

You are assessed by unseen written examinations. You do not have to enter for examinations every year: you decide when you are ready. Examinations are set and marked by our academics to ensure your work is assessed to the same standard as College-based students at LSE. They are held once a year, in May/June, at local centres in over 180 different countries as well as in London. For most courses you sit a three-hour paper (or a two-hour paper for each half course). For some courses a project/coursework also counts towards your assessment:

Library support

LSE library

Registered students may have access to the main LSE Library for reference only. See: lse.ac.uk/library

Senate House Library

Registered students are entitled to use Senate House Library. See: ull.ac.uk



Support for your studies

Online study month

LSE runs an online study month designed to help you with your study skills and examination preparation. Running for four weeks in February and March on the Virtual Learning Environment (VLE), the study month consists of a series of pre-recorded lectures covering the core concepts and key debates of your chosen courses. The final two weeks of the study month focus on testing your understanding and preparing for your examinations. In between each session, you also complete readings and activities and can use the moderated online forums to discuss the topics covered.

LSE Summer School

LSE runs two three-week Summer Schools each year, usually from early July to mid-August. You are welcome to join the schools, which offer a range of intellectually stimulating and academically challenging courses designed to allow students, academics and professional people to undertake a period of intensive study in areas of interest to them. If you successfully complete two Summer School courses, you may gain accreditation of prior learning (APL) for one 100 course. Visit: bit.ly/lse-summer-school

General study course

Students who have completed at least four courses from the degree are able to apply for admission to the LSE General Course and claim credit for the successful completion of relevant courses. The General Course is an opportunity for students of the International Programmes to experience life at LSE, attending lectures and classes for the period of a full academic year of study (October–July). For more information visit: lse.ac.uk/study/UOLIP/transfer_change.aspx

Scholarships for students to study at Masters level in London at LSE

Scholarships for MSc study are awarded annually to students who have successfully completed one of the degrees in Economics, Management, Finance and the Social Sciences as International Programmes students, and who have also been accepted for postgraduate study at LSE.

To qualify, students will normally have, or expect to have, a first class honours degree from the University of London International Programmes. These scholarships normally cover full fees and maintenance.

Two trusted names in global education

SIM Global Education (GE) is part of the University of London's global network of teaching institutions. It has been awarded the highest status of Affiliate Centre in recognition of its commitment to high quality teaching and support to students.

It is the largest and leading private educational institution in Singapore, known for its high standards and vibrant student experience. Its state-of-the-art campus has a global atmosphere, with local students mixing with students of other cultures and backgrounds.

In 2016 the University of London and SIM GE celebrates 30 years of successful partnership. From an initial intake of only 40 students in 1986, there are now 8,500 current students and over 29,300 graduates who have studied for University of London degrees at SIM GE.



Connect with us online



Follow us on Twitter

Follow the LSE Office for the University of London International Programmes on Twitter for all the latest news and updates. twitter.com/emfss



'Like' us on Facebook

Visit our Facebook page to keep up to date with the latest news and events. Get in touch with alumni of the programmes and current students. tinyurl.com/emfss-like

The Student Portal



You are required to confirm on your application form that you have (or will have) access to the internet so that you are able to make use of resources which are only available online. As soon as you have registered we will send you a University of London username and password which will allow you to log in to the Student Portal. Once logged in, you can also access your University of London email account. All of the online resources available to students can be found in the Portal.

The Virtual Learning Environment (VLE)

By supporting your studies and helping you feel part of a community, the VLE forms an important part of your study experience with us. It provides:

- **Electronic study materials:** All of the printed materials which you receive from the University of London are available to download, to give you flexibility in how and where you study.
- **Student discussion forums:** An open space for you to discuss interests and seek support from your peers, working collaboratively to solve problems and discuss subject material. Some forums are moderated by an LSE academic.
- **Videos:** Recorded academic introductions to many subjects; interviews and debates with academics who have designed the courses and teach similar ones at LSE.
- **Recorded lectures:** For a few subjects, where appropriate, various teaching sessions of the course have been recorded and made available online via the VLE.

- **Audiovisual tutorials and solutions:** For some of the first year and larger later courses, such as Introduction to Economics, Statistics, Mathematics and Principles of Banking and Finance, audiovisual tutorials are available to help you work through key concepts and to show the standard expected in examinations.
- **Self-testing activities:** Allowing you to test your own understanding of subject material.
- **Study skills:** Expert advice on getting started with your studies, preparing for examinations and developing your digital literacy skills.
- Students registered for Laws courses also receive access to the dedicated Laws VLE.

PREVIEW: You can preview some of the resources that are available at: www2.lse.ac.uk/study/UOLIP/study_materials.aspx

The Online Library

The Online Library holds thousands of journal articles which you will be able to access free of charge. Many of the courses on the EMFSS programmes make use of journal articles in the essential reading lists. The Online Library with its state-of-the-art search engine, Summon, is accessed via the Student Portal. Summon is a Google-like search engine that provides fast, relevancy ranked results through a single search box.

For many students, using an Online Library and reading journal articles are new skills. We provide support and guidance on the best way to approach journal resources and a range of materials are available designed to improve your reading and information skills. A dedicated helpdesk is also available if you have any difficulties in finding what you need.



Dr James Abdey

Department of Statistics, LSE

'Statistics 1 is a core first-year course for many of the LSE-led degrees. Although it's compulsory, many students may not have had much previous statistical exposure.

To support students, a range of learning resources relating to Statistics is available through the VLE. In the video tutorials you hear me explaining a concept. Rather than just solving a question, I will also tailor the answer for an exam situation: Exactly how should this solution be structured? What are the Examiners looking for? You can't get that level of guidance straight from the subject guide.

The great thing with the VLE is that it's 24-hour access, wherever students are around the world. Online resources include video tutorials, a Q&A forum where students can post questions; self-test quizzes for each subject guide chapter; and recorded mini lectures which are particularly useful for independent learners.

Having these different forms of resources, students can pick and choose which they use.'

“The great thing with the VLE is that it's 24-hour access, wherever students are around the world.”

Fast track to professional accreditation

Thinking ahead

Graduates of the BSc Accounting and Finance, BSc Accounting with Law, and BSc Banking and Finance degrees who wish to continue to professional accreditation may be able to get exemptions for certain modules from five professional bodies. This means you can gain your professional accreditation more quickly.

BSc Accounting and Finance graduates



- Eligible to claim credit for up to six Professional Stage modules

Students study for the full ACA qualification while in full-time employment. BSc Accounting and Finance graduates can claim credit for up to six Professional Stage modules required for qualification, depending upon the options chosen and grades achieved. Details can be found on their website: icaew.com/careers

CIMA

Chartered Institute of Management Accountants

- Eligible to receive up to five exemptions from CIMA's Certificate in Business Accounting and CIMA's Operational Levels for P1 and F1

Graduates who have passed the required specified EMFSS courses are eligible to receive exemptions for CIMA's Certificate in Business Accounting (exemptions being granted for C01–C05) and also CIMA's Operational Levels for P1 (Performance Operations) and F1 (Financial Operations) that count towards CIMA's Diploma in Management Accounting: cimaglobal.com

BSc Accounting and Finance graduates

BSc Accounting with Law graduates



ACCREDITED PROGRAM

- Eligible to receive up to eight exemptions from the CPA Australia Programme

BSc Accounting and Finance and BSc Accounting with Law graduates are eligible to receive up to eight exemptions from the CPA programme. Graduates achieving exemptions could progress directly to the Professional Level of the programme. Please check the accredited courses page on the CPA Australia website for more details. Further information: cpaaustralia.com.au

BSc Accounting and Finance graduates

BSc Accounting with Law graduates

BSc Banking and Finance graduates



- Eligible for exemption from certain ACCA modules leading to professional qualification.

Graduates from the above programmes who have passed combinations of courses on these degrees are eligible for exemption from certain ACCA modules leading to professional qualification. Further information: accaglobal.com

BSc Accounting and Finance graduates

BSc Accounting with Law graduates

BSc Banking and Finance graduates



- Eligible to qualify for the Singapore Qualification Programme

Graduates of the above programmes who pass certain courses as specified by the Singapore Qualification Programme, with a mark of 60% or more, are eligible to apply for exemptions from a number of the Core Syllabus Areas of the Singapore QP Academic Base. More details about the Singapore Qualification Programme are available at: singaporeqp.com



The route around our programmes



The FHEQ framework

The UK's Quality Assurance Agency for Higher Education (QAA) established the FHEQ as a framework for all further and higher education qualifications.

Providing an important reference point, the FHEQ is based primarily on the concepts of levels and comparability. It helps providers of higher education to: maintain academic standards; inform international comparability of academic standards; ensure international competitiveness; and facilitate student/graduate mobility.

Within the context of higher education awards, the FHEQ levels are: Level 4, Level 5 and Level 6. Levels 1–3 refer to pre-University education, while Level 7 is Masters-level. For ease of reference, we have adopted the following terminology:

- 100 courses (equivalent to FHEQ Level 4)
- 200 courses (equivalent to FHEQ Level 5)
- 300 courses (equivalent to FHEQ Level 6)

By assigning each course to the appropriate FHEQ level and presenting programme structures in terms of levels, comparisons can now be drawn more easily across the suite of BSc awards.

Course codes

The six-character course code is made up of three separate elements: the subject area, the course level and the unique course designator, respectively.

Example

AC1025 Principles of accounting

AC denotes the subject area (Accounting).

1 indicates that this is a 100 course (2 indicates a 200 course, 3 a 300 course).

025 is the unique course designator.

Rules of progression for BSc degrees

Courses are taken at three levels, representing the nominal three-year period of study. In your first year of study you must demonstrate the capacity to succeed at Level 4 (100) courses before advancing to Level 5 (200) or Level 6 (300) courses, unless you have received APL.

In terms of your progression through the Standard Route degree programmes, the following rules apply:

- you can take up to four full new courses in a year

- in your final year of study, you may take five new courses in order to complete your 12 courses, provided you are not carrying a failed course
- you may take a maximum of five courses at any examination period, in any combination of new courses and resits
- you may take an individual course in your final year, provided you do not take more than four other courses
- in your first year of study, you may only take 100 courses, unless you have received APL and are therefore permitted to take 200 or 300 courses
- to be eligible for the award of a degree, you must attempt all 12 courses of the study programme and pass a minimum of 11
- for the Graduate Entry Route degree programmes, you must successfully pass all nine courses to be eligible for the award of degree.

Programme structures

All of the programme structures given in this prospectus are subject to confirmation in the 2016–2017 Programme regulations. The regulations also contain full details on the rules that govern the choice of any course.

BSc degrees

Who are they for?

The BSc degree programmes provide an excellent foundation for a wide variety of careers ranging from accounting, banking and information systems to the media, civil service and journalism. All of the programmes can act as a stepping stone to further study at undergraduate and Masters level.

You can gain a world-class degree through flexible study, while being encouraged to think critically and creatively. The programmes will also enable you to increase your understanding of how and why modern societies, institutions and economic systems function in the way they do.

Degree structures

BSc degrees consist of 12 courses when taken through the Standard Route and nine courses through the Graduate Entry Route. Courses are classified as either 100, 200 or 300.

Choosing your courses

For most degrees you have a certain amount of choice in the courses that you take. In the structures you will see that you can choose from a variety of Selection groups. You have control, within certain guidelines, over the number and choice of examinations you take each year.

Accreditation of prior learning (APL), Standard Route only

You may apply for APL from up to four full 100 courses. APL is awarded on an automatic or discretionary basis. You are advised to apply as early as possible if you want to claim APL from a course. For further information please see: bit.ly/emfss_APL

Classification

Degrees are awarded with the following classifications: First Class Honours, Second Class Honours (divided into Upper Division and Lower Division), Third Class Honours.

Entrance Requirements

BSc degree (Standard Route)

You must:

- normally* be aged 17 or above by the 30 November in the year of registration **and**
- meet our General Entrance Requirements **and**
- demonstrate competence in Mathematics at least equivalent to UK GCSE/GCE O level at Grade C or above** **and**
- meet our English language requirement. We may require a test of proficiency in English

BSc degree (Graduate Entry Route)

You must:

- hold an undergraduate degree from an awarding institution acceptable to the University of London **and**
- demonstrate competence in Mathematics at least equivalent to UK GCSE/GCE O level at Grade C or above **and**
- meet our English language requirement. We may require a test of proficiency in English.

*Applications will be considered from applicants who do not meet the normal minimum age requirement for admission. Each application will be considered on an individual basis, and the decision taken at the discretion of the University of London.

**Applicants applying to the BSc Mathematics and Economics degree must demonstrate competence in Mathematics at least equivalent to UK GCE A level at Grade E or above.

For full details on how to meet our entrance requirements, including further information on our General Entrance Requirements, UK GCSE/GCE O level equivalents, UK GCE A level equivalents and English language requirements you should visit: londoninternational.ac.uk/courses/search



BSc Accounting and Finance

Programme overview



"This degree gives you an understanding of accounting and finance that will be useful throughout your career. This means that we do not simply teach accounting techniques and focus on computational skills with the aim of immediate application, but to enable you to evaluate their usefulness in different contexts. We encourage you to adopt a critical and flexible viewpoint and to look at the subject from a variety of perspectives, including the international dimension."

Dr Libon Fung

Programme specifics

Where can it lead?

- A range of careers including accounting, investment banking, management consultancy, financial management, plus investment analysis and management.

Features of the degree

- A thorough grounding in accounting and finance within a strong social science framework.
- An international flavour, developed in consultation with academics and professionals throughout Southeast Asia as well as the UK.
- The degree has been developed by LSE academics within the Departments of Accounting and Finance, both of which enjoy pre-eminent reputations for the excellence of their teaching and research.
- BSc Accounting and Finance graduates can take advantage of 'fast track' agreements with certain professional bodies (please see page 13).

"Through my studies, I managed to obtain a very good understanding of how you manage the finances of a company, and how you ensure that the company is viable. At the end of the day, you gain the study skills and a very good understanding of what you have studied. You should get a job with ease."

Jeron Lee Kenzhen, BSc Accounting and Finance, Malaysia

Jeron began working for Ernst & Young Malaysia during the second year of his degree and secured a coveted position as an Audit Associate before he had graduated. Read an interview with Jeron on London Connection: bit.ly/kenzhen



Standard Route

100 courses

- 1 EC1002 Introduction to economics
- 2 ST104A Statistics 1 (half course) and MT105A Mathematics 1 (half course)
- 3 FN1024 Principles of banking and finance
- 4 AC1025 Principles of accounting
- 5 One course (or two half courses) from Selection groups F1 or F2

200 and 300 courses

- 6 MN3028 Managerial economics or EC2066 Microeconomics
- 7 AC3059 Financial management or FN3092 Corporate finance
- 8 AC3091 Financial reporting
- 9 AC3093 Auditing and assurance
- 10 AC3097 Management accounting
- 11 One course from Selection groups B, E or M
- 12 One 200 or 300 course (or two half courses) from any Selection group

Graduate Entry Route

100 courses

- 1 EC1002 Introduction to economics
- 2 ST104A Statistics 1 (half course) and MT105A Mathematics 1 (half course)
- 3 AC1025 Principles of accounting

200 and 300 courses

- 4 MN3028 Managerial economics or EC2066 Microeconomics
- 5 AC3059 Financial management or FN3092 Corporate finance
- 6 AC3091 Financial reporting
- 7 AC3093 Auditing and assurance
- 8 AC3097 Management accounting
- 9 One full 200 or 300 course from Selection groups E or M



Komal Shakeel

BSc Accounting and Finance, Pakistan

'I am working with the World Bank Pakistan office and providing technical support to the Ministry of Finance, Pakistan. It is a very unique and interesting mix. I get to have my feet both in the most important ministry in the Government as well as one of the most influential international organisations. I think I am getting the best of both worlds and that really gives me a broad perspective.

I wanted to bring the technical expertise and international exposure to help development in Pakistan. Little did I know that I would get a chance of doing that so early in life. Even a small change can impact millions of people in my country.'

Following her undergraduate degree, Komal was awarded a full scholarship by LSE to pursue a Master's in Social Policy. Following this, she began working for the Planning Commission of Pakistan before joining the World Bank in 2015. Read more in our online magazine, London Connection: bit.ly/komal-shakeel

“I wanted to bring the technical expertise and international exposure to help development in Pakistan. Little did I know that I would get a chance of doing that so early in life.”

BSc Banking and Finance

Programme overview



'This degree provides you with an understanding of the way in which financial intermediaries and institutions operate and the structure and functioning of financial markets. You will learn about the pricing of financial assets and why and how corporations choose and issue various types of assets. The banking courses provide information on precisely how financial intermediaries operate, both on a domestic level and in the international arena.'

Dr Vicente Cuñat

Programme specifics

Where can it lead?

- A range of careers including accountancy, consulting, commercial banking, investment, sales, banking, trading, and risk management.

Features of the degree

- You begin with a strong foundation in quantitative, economic, accounting and finance subjects.
- You progress to a core of compulsory 200 and 300 courses in finance, banking and risk management.
- You can choose optional courses in related areas which complement the core courses to give well-rounded coverage of the major issues and areas of modern financial theory and practice.
- BSc Banking and Finance graduates can take advantage of 'fast track' agreements with certain professional bodies (please see page 13).

"The University of London is recognised worldwide by employers and has a good, reputable alumni network. I had the flexibility to choose subjects that suited my future career and interests. Units such as Investment Management taught me how financial systems work and how investors manage their portfolio, which are very relevant to my current role."

Lim Yun Yi,
BSc Banking and Finance,
Singapore

Lim Yun Yi was an inaugural recipient of an HSBC-SIM Retail Banking and Wealth Management Scholarship in 2013. She is now employed by the bank as a Senior Personal Wealth Manager. Read more at London Connection: bit.ly/yun-yi



Standard Route

100 courses

- 1 EC1002 Introduction to economics
- 2 ST104A Statistics 1 (half course) **and** MT105A Mathematics 1 (half course)
- 3 FN1024 Principles of banking and finance
- 4 AC1025 Principles of accounting
- 5 One course (or two half courses) from Selection groups F1 or F2

200 and 300 courses

- 6 FN3092 Corporate finance
- 7 EC2020 Elements of econometrics **or** EC2065 Macroeconomics **or** EC2066 Microeconomics
- 8 FN2029 Financial intermediation
- 9 FN3023 Investment management
- 10 One 300 course from Selection groups A, B, E or M
- 11 One 300 course (or two half courses) from any Selection group
- 12 One 200 or 300 course (or two half courses) from any Selection group

Graduate Entry Route

100 courses

- 1 EC1002 Introduction to economics
- 2 ST104A Statistics 1 (half course) **and** MT105A Mathematics 1 (half course)
- 3 FN1024 Principles of banking and finance
- 4 AC1025 Principles of accounting

200 and 300 courses

- 5 FN3092 Corporate finance
- 6 EC2065 Macroeconomics **or** EC2066 Microeconomics
- 7 FN2029 Financial intermediation
- 8 FN3023 Investment management
- 9 One 300 course (or two half courses) from any Selection group

BSc Business and Management

Programme overview



'This degree programme prepares you for the demanding world of business and management. It looks at business and management issues analytically and critically. The degree provides you with a knowledge and understanding of a number of issues in international management, while allowing you to learn from issues and experiences relevant to your local environment. Most importantly, you will acquire the ability to think independently about business and management decisions, and gain a degree which will be valued by employers looking for people who can demonstrate logical and quantitative reasoning.'

Dr Jörn Rothe

Programme specifics

Where can it lead?

- A range of careers including business, banking, general management, accountancy, management consulting, and marketing.

Features of the degree

- Gain the ability to analyse business and management issues from the perspective of various social science disciplines.
- Critically evaluate claims made on a range of management issues.
- Address foundational and contemporary management issues, either public or private according to the courses you choose.
- Develop problem-solving skills by applying theory and theoretical models in practical situations.

“The University of London is a global university of a global city with global opportunities. It provided me with the opportunity of further study at the world renowned LSE, the opportunity of establishing a global network of friends, and equipped me with the ability to get good jobs in companies with international reach.”

Wong Boon Pin,
BSc Business and Management,
Singapore

Boon Pin is an alumni ambassador for the International Programmes, and is currently working as a Resource Management Executive for an international company in the aviation industry. Read more in our London Connection article: bit.ly/wong-boon-pin



Standard Route

100 courses

- 1 EC1002 Introduction to economics
- 2 MT105A Mathematics 1 (half course) **and** ST104A Statistics 1 (half course)
- 3 AC1025 Principles of accounting
- 4 MN1178 Business and management in a global context

200 and 300 courses

- 5 MN2177 Core management concepts
- 6,7,8,9 **Four courses** from the following:
 - FN3092 Corporate finance **or**
 - AC3059 Financial management
 - IS2136 Information systems and organisations
 - MN3028 Managerial economics
 - MN3032 Management science methods
 - MN3075 Human resource management
 - MN3119 Strategy
 - MN3127 Organisation theory: an interdisciplinary approach
 - MN3141 Principles of marketing
 - SP2079 Elements of social and applied psychology
- 10,11 **Two 300 courses** from Selection group M
- 12 One 100, 200 or 300 course (or two half courses) from any Selection group

Graduate Route

100 courses

- 1 EC1002 Introduction to economics
- 2 MT105A Mathematics 1 (half course) **and** ST104A Statistics 1 (half course)
- 3 AC1025 Principles of accounting
- 4 MN1178 Business and management in a global context

200 and 300 courses

- 5 MN2177 Core management concepts
- 6,7,8 **Three courses** from the following (you must choose at least two 300 courses):
 - FN3092 Corporate finance **or**
 - AC3059 Financial management
 - IS2136 Information systems and organisations
 - MN3028 Managerial economics
 - MN3032 Management science methods
 - MN3075 Human resource management
 - MN3119 Strategy
 - MN3127 Organisation theory: an interdisciplinary approach
 - MN3141 Principles of marketing
 - SP2079 Elements of social and applied psychology
- 9 One 300 course from Selection group M



Professor Leslie Willcocks

Department of Management, LSE

'Business and Management is central to operating in the modern business world. As a student, you will find understanding and analysing international business and making managerial judgements full of fresh challenges. You will also find that the study of Business and Management not only provides insights, but also gives you the analytical equipment and knowledge to actually begin to perform in a business that operates globally.

As an LSE professor, my role in the course has been to write the subject guide, and act as an examiner. I teach Global Business Management on the full-time courses at LSE, and research and publish in the areas of global sourcing, strategic management, managing information technologies, organisational change and digital business.'

“As a student, you will find understanding and analysing international business and making managerial judgements full of fresh challenges.”

BSc Development and Economics

Programme overview

'Do you want to know more about international development and the causes and solutions to global inequality? If so, this degree may be for you. Studying this degree will provide you with analytical and communication skills that are valued by employers and institutions. Perhaps more importantly, it gives you the chance to gain knowledge from a wide variety of sources that will demonstrate the importance of development, and give you the chance to understand more about what is happening in the world today'.

Professor Tim Forsyth

Programme specifics

Where can it lead?

- You may already be working for a development agency in a developing country and want to take a qualification. Or you may hope to start a career in international development with an NGO or government development agency.

Features of the degree

- An opportunity to study aspects of development such as urbanisation, housing and infrastructure, poverty and social exclusion, environmental concerns and issues of gender.
- A thorough grounding in the fundamentals of economics, sociology and human geography subjects whose literature demonstrates key links with the process of development. Key mathematical and statistical skills are acquired in the early stages of the degree.
- Case study material is drawn widely from Southeast Asia, Latin America and Africa. However you can also use your own knowledge of the development process wherever you live.

"Studying this degree will provide you with analytical and communication skills that are valued by employers and institutions."

Professor Tim Forsyth
Professor of Environment and Development



Standard Route

100 courses

- EC1002 Introduction to economics
- ST104A Statistics 1 (half course) **and** MT105A Mathematics 1 (half course)
- DV1171 Introduction to international development
- SC1179 Contemporary sociology in a global age

200 and 300 courses

- EC2065 Macroeconomics
- EC2066 Microeconomics
- GY2109 Geographies of development
- EC3044 Economics of development
- One 300 course from Selection groups D or E
- One 300 course from Selection group D
- One 300 course from Selection group D
- One 100, 200 or 300 course (or two half course) from any Selection group

Graduate Entry Route

100 courses

- EC1002 Introduction to economics
- ST104A Statistics 1 (half course) **and** MT105A Mathematics 1 (half course)
- DV1171 Introduction to international development
- SC1179 Contemporary sociology in a global age

200 and 300 courses

- EC2065 Macroeconomics
- EC2066 Microeconomics
- GY2109 Geographies of development
- EC3044 Economics of development
- One 300 course from Selection groups D or E

Additional information

Through the Graduate Entry Route the degree takes a minimum of three years to complete.

BSc Economics

Programme overview



'This degree builds on a foundation of economic theory and the necessary mathematics and statistics in the 100 courses. It deepens that intellectual platform in the 200 and 300 courses: a wide choice of more specialised options including economic policy, and the application of economic theory to particular topics. Depending on your choice of courses, the study of economics will give you greater understanding both of particular areas such as public economics or international trade, and of the broader behaviour of economies. While much of the subject is settled territory, one of the excitements of economics is that it remains work in progress, as the recent international economic crisis makes clear.'

Dr Margaret Bray

Programme specifics

Where can it lead?

- An excellent foundation for employment as an economist in industry, finance, government or international organisations, among others.

Features of the degree

- You will benefit from the expertise of LSE's Department of Economics, frequently ranked number one outside the USA for its published research.
- You will study subjects ranging from how all the households and businesses in the country interact to determine national output, to the balance of payments, inflation and unemployment.
- You will learn an approach to analysing both social and individual decision-making and a whole range of problems often thought of as being outside the conventional domain of economics.

"The BSc Economics degree is designed in a very exciting way which encourages students to think about economic systems in a critical and analytical way. This degree provides a strong theoretical foundation in economics enabling students to gain a deep understanding about complex economic systems in the world we live in."

Dhanushka Goonathilaka, BSc Economics, Sri Lanka

After graduating with a First Class degree, Dhanushka is now working as a Financial Analyst for an international asset management firm headquartered in Singapore.



Standard Route

100 courses

- 1 EC1002 Introduction to economics
- 2 ST104A Statistics 1 (half course) and ST104B Statistics 2 (half course)
- 3 MT105A Mathematics 1 (half course) and MT105B Mathematics 2 (half course)
- 4 One course (or two half courses) from Selection groups F1 or F2

200 and 300 courses

- 5 EC2020 Elements of econometrics
- 6 EC2065 Macroeconomics
- 7 EC2066 Microeconomics
- 8 One 300 course from Selection group E
- 9 One 300 course from Selection group E
- 10 One 300 course from Selection group E
- 11 One 200 or 300 course from Selection group E
- 12 One 100, 200 or 300 course (or two half courses) from any Selection group

Graduate Entry Route

100 courses

- 1 EC1002 Introduction to economics
- 2 ST104A Statistics 1 (half course) and ST104B Statistics 2 (half course)
- 3 MT105A Mathematics 1 (half course) and MT105B Mathematics 2 (half course)

200 and 300 courses

- 4 EC2020 Elements of econometrics
- 5 EC2065 Macroeconomics
- 6 EC2066 Microeconomics
- 7 One 300 course from Selection group E
- 8 One 300 course from Selection group E
- 9 One 200 or 300 course from Selection group E

BSc Economics and Finance

Programme overview



'This degree has been designed to provide the economic reasoning, quantitative skills and institutional knowledge required by financial

economists to solve practical problems arising in finance. These skills should make graduates highly suited for further studies as well as for a career in investment banking or in financial markets. The degree offers you the opportunity to combine in-depth studies in economics and finance. It provides you with the analytical tools from the fields of mathematics, statistics, economics and econometrics together with the institutional knowledge required to work as a financial economist.'

Dr Vicente Cuñat

Programme specifics

Where can it lead?

- A career as a financial economist, whether in government or finance (investment or commercial banking, risk management, research, fund management or securities trading). The combination of economic reasoning and mathematical and other quantitative skills should suit those interested in a career in consultancy, general management or accountancy. It also provides a sound basis for further academic study.

Features of the degree

- A thorough programme grounded on quantitative, economics and finance subjects.
- Those pursuing the Standard Route can choose optional courses in economics and finance as well as in related areas such as accounting.
- More generally, the degree is designed to develop excellent analytical skills which should be useful in the context of further studies or work as an economist.

"The most useful skill I learned from the University of London is understanding the causes of things. To think critically and never take anything for granted without your own analysis – that is what every university should teach."

Vassiliy Kosov, BSc Economics and Finance, Russia

Vassiliy studied at the International College of Economics and Finance in Russia. He was awarded a scholarship by LSE to study for an MSc in Finance and Private Equity. Read more at our online magazine, London Connection: bit.ly/lc-vassiliy-kosov



Standard Route

100 courses

- 1 EC1002 Introduction to economics
- 2 ST104A Statistics 1 (half course) and ST104B Statistics 2 (half course)
- 3 MT105A Mathematics 1 (half course) and MT105B Mathematics 2 (half course)
- 4 FN1024 Principles of banking and finance

200 and 300 courses

- 5 EC2065 Macroeconomics
- 6 EC2066 Microeconomics
- 7 EC2020 Elements of econometrics
- 8 FN3092 Corporate finance
- 9 EC3115 Monetary economics or EC3099 Industrial economics
- 10 FN3142 Quantitative finance
- 11 One 300 course (or two half courses) from any Selection group
- 12 One 100, 200 or 300 course (or two half courses) from any Selection group

Graduate Entry Route

100 courses

- 1 EC1002 Introduction to economics
- 2 ST104A Statistics 1 (half course) and ST104B Statistics 2 (half course)
- 3 MT105A Mathematics 1 (half course) and MT105B Mathematics 2 (half course)
- 4 FN1024 Principles of banking and finance

200 and 300 courses

- 5 EC2065 Macroeconomics
- 6 EC2066 Microeconomics
- 7 EC2020 Elements of econometrics
- 8 FN3092 Corporate finance
- 9 FN3142 Quantitative finance

Additional information

Through the Graduate Entry Route the degree takes a minimum of three years to complete.

BSc Economics and Management

Programme overview



'What makes management such an interesting subject is the combination of so many fields, with economics being

central. This degree provides you with economic concepts that are relevant for management and shows you how to apply them. It also gives you the opportunity to acquire the foundations of complementary disciplines like finance, accounting, sociology, as well as the necessary quantitative methods. Together with your optional course choices these subjects cover all relevant aspects of management from many different perspectives. As a result you will be able to understand how organisations work and how they interact. Analysing the structure and strategies of firms will allow you to understand the evolution of industries and the functioning of markets. This ability to apply economic reasoning and to think independently about management is critical for managers and entrepreneurs.'

Dr Jörn Rothe

Programme specifics

Where can it lead?

- A variety of areas including management consultancy, banking and accountancy; some choose to pursue postgraduate studies.

Features of the degree

- A strong emphasis on social science theory and practice.
- Knowledge and understanding of a range of issues in international management and economics.
- A degree which will be valued by employers who are looking for people who can demonstrate logical and quantitative reasoning.

"The reputation of the University and my college, LSE, inspired trust. Add flexibility and reasonable cost and you know why I selected the University of London International Programmes."

Tina Goryucheva, BSc Economics and Management, Dubai

Tina is studying for her degree alongside her role as Marketing Manager at a green technology firm. Read more in our online magazine, London Connection: bit.ly/lc-tina-goryucheva



Standard Route

100 courses

- 1 EC1002 Introduction to economics
- 2 MT105A Mathematics 1 (half course) **and** ST104A Statistics 1 (half course)
- 3 One course (or two half courses) from Selection groups F1 or F2
- 4 AC1025 Principles of accounting
- 5 MN1178 Business and management in a global context

200 and 300 courses

- 6 MN2177 Core management concepts
- 7 MN3028 Managerial economics **or** EC2066 Microeconomics
- 8 EC2065 Macroeconomics
- 9 **One course** taken from the following:
 - FN3092 Corporate finance **or**
 - AC3059 Financial management
 - IS2136 Information systems and organisations
 - MN3032 Management science methods
 - MN3075 Human resource management
 - MN3119 Strategy
 - MN3127 Organisation theory: an interdisciplinary approach
 - MN3141 Principles of marketing
 - SP2079 Elements of social and applied psychology
- 10 One 300 course from Selection group E
- 11 One 300 course from Selection group M
- 12 One course from Selection groups E, M or S

Graduate Entry Route

100 courses

- 1 EC1002 Introduction to economics
- 2 MT105A Mathematics 1 (half course) **and** ST104A Statistics 1 (half course)
- 3 AC1025 Principles of accounting
- 4 MN1178 Business and management in a global context

200 and 300 courses

- 5 MN2177 Core management concepts
- 6 MN3028 Managerial economics **or** EC2066 Microeconomics
- 7 EC2065 Macroeconomics
- 8 **One course** taken from the following:
 - FN3092 Corporate finance **or**
 - AC3059 Financial management
 - MN3032 Management science methods
 - MN3075 Human resource management
 - MN3119 Strategy
 - MN3127 Organisation theory: an interdisciplinary approach
 - MN3141 Principles of marketing
- 9 One 300 course from Selection group E

BSc Economics and Politics

Programme overview

'This degree provides you with an understanding of the fundamental aspects of economic analysis, as well as enabling you to formulate and develop economic and political arguments in a logical manner. You will learn how to apply economic principles and quantitative techniques to the analysis of economic data, and will show a detailed and critical understanding of the main theoretical debates in the field of politics.'

Dr Eiko Thielemann

Programme specifics

Where can it lead?

- This degree will help prepare you for a career in areas ranging from major corporations to small businesses, government organisations, the voluntary sector, international organisations and the media.

Features of the degree

- You will gain an understanding of economics and politics in the wider context of the social sciences.
- Learn how to demonstrate your knowledge and skills in applying economic reasoning to the analysis of a wide range of policy issues.
- Gain a detailed and critical understanding of the main theoretical debates in the field of economics and politics.

Additional information

Through the Graduate Entry Route the degree takes a minimum of three years to complete.

"The three compulsory courses (EC1002, EC2065 and EC2066) provide all students on the joint degree with a comprehensive and rigorous foundation in modern economic analysis. The selected optional level 3 courses provide the opportunity, in the chosen subject, to specialise at a more advanced level. All these optional courses blend theory and policy analysis in a way that should be instructive to students on the joint degree."

Dr Eiko Thielemann
Department of Economics, UCL



Standard Route

100 courses

- 1 EC1002 Introduction to economics
- 2 MT105A Mathematics 1 (half course) and ST104A Statistics 1 (half course)
- 3 PS1130 Introduction to modern political thought
- 4 PS1172 Introduction to political science

200 and 300 courses

- 5 EC2065 Macroeconomics
- 6 EC2066 Microeconomics
- 7 PS2082 Comparative Politics
- 8 **One course** taken from the following:
 - EC3015 Economics of labour
 - EC3016 International economics
 - EC3022 Public economics
 - EC3044 Economics of development
 - EC3099 Industrial economics
 - EC3115 Monetary economics
- 9 **One course** taken from the following:
 - PS3086 Democracy and democratisation
 - PS3088 Politics and policies of the European Union
 - PS3108 Political analysis and public choice
- 10 One 300 course from Selection group E
- 11 One 300 course from Selection group IR or P
- 12 One 200 or 300 course from any Selection group

Graduate Entry Route

100 courses

- 1 EC1002 Introduction to economics
- 2 MT105A Mathematics 1 (half course) and ST104A Statistics 1 (half course)
- 3 PS1130 Introduction to modern political thought or PS1172 Introduction to political science

200 and 300 courses

- 4 EC2065 Macroeconomics
- 5 EC2066 Microeconomics
- 6 PS2082 Comparative politics
- 7 **One course** taken from the following:
 - EC3015 Economics of labour
 - EC3016 International economics
 - EC3022 Public economics
 - EC3044 Economics of development
 - EC3099 Industrial economics
 - EC3115 Monetary economics
- 8 **One course** taken from the following:
 - PS3086 Democracy and democratisation
 - PS3088 Politics and policies of the European Union
 - PS3108 Political analysis and public choice
- 9 One 300 course from selection group E, IR or P

BSc Information Systems and Management

Programme overview



'Information and communications technology (ICT) has had a huge effect on our world. It has enabled new

forms of communication and automation; opened new markets and opportunities across the globe; and created new types of business and government. It is not technology which has achieved this, but the way it's used by people in social settings. This degree studies information systems as technical and social phenomena. It provides the skills needed by managers to solve organisational and business problems using ICT, as well as providing an understanding of the wider social impact of the technology.'

Dr Steve Smithson

"The degree programme delivers a deep understanding of core subject matter, as well as the opportunity to follow subjects which complement the main streams of study. This ensures that you will have a broader knowledge, which is highly valued by the corporate world."

Chalinda Abeykoon
BSc Information Systems and Management,
Sri Lanka

Chalinda studied at the Royal Insitute Columbo (RIC) in Sri Lanka. Read more about him in our online magazine, London Connection: bit.ly/lc-chalinda-abeykoon

Programme specifics

Where can it lead?

- A range of careers including information systems management, and management consultancy specialising in ICT and information systems. It would also give you a distinct advantage in other careers in public and private organisations.

Features of the degree

- A focus on how computers are used within business and administrative organisations. It is natural therefore to combine the study of information systems with the study of management.
- An opportunity to demonstrate your practical skills by submitting coursework, including computer-based work. You will need access to a standard computer with standard database, spreadsheet, programming language and word processing software.



Standard Route

100 courses

- 1 IS1060 Introduction to information systems
- 2 MN1178 Business and management in a global context
- 3 IS1168 Introduction to computer systems architecture and programming
- 4 **One course** taken from the following:
 - EC1002 Introduction to economics
 - GY1009 Human geography
 - IR1011 Introduction to international relations
 - SC1179 Contemporary sociology in a global age

200 and 300 courses

- 5 MN2177 Core management concepts
- 6 IS2062 Information systems development and management
- 7 IS2138 information and communication technologies: principles and perspectives
- 8 IS3139 Software engineering: theory and application
- 9 IS3159 Research project in information systems
- 10 IS3167 Management and innovation of e-business
- 11 One 300 course from Selection group M
- 12 One 100, 200 or 300 course taken from any Selection group

Graduate Entry Route

100 courses

- 1 IS1060 Introduction to information systems
- 2 MN1178 Business and management in a global context
- 3 IS1168 Introduction to computer systems architecture and programming
- 4 **One course** taken from the following:
 - GY1009 Human geography
 - IR1011 Introduction to international relations
 - SC1179 Contemporary sociology in a global age

200 and 300 courses

- 5 MN2177 Core management concepts
- 6 IS2062 Information systems development and management (IS1060)
- 7 IS2138 Information and communication technologies: principles and perspectives
- 8 IS3139 Software engineering: theory and application **or** IS3159 Research project in information systems
- 9 IS3167 Management and innovation of e-business

Additional information

Through the Graduate Entry Route the degree takes a minimum of three years to complete.



Dr Steve Smithson

Department of Management,
LSE, Subject guide author:
Research project in
information systems

'The degree includes a new course on "Management and innovation of e-business". E-business has changed people's lives so much – changed their social lives through social networking sites (like Facebook), content-sharing sites (like YouTube) and blogs, and changed their working lives through the use of web-based systems. There's a tremendous hype that's grown up around web 2.0, like many previous information technologies. However, relatively few businesses are actually making much money out of it or are able to harness web 2.0 to make changes in the bottom line. It's only recently that enough research material has been gathered together to put together a solid, academic course on the subject. The "Management and innovation of e-business" course is at the cutting edge of knowledge on the subject.'

Watch Steve talk about
'The Importance of E-Business'
on our YouTube channel:
bit.ly/steve-smithson

“ The degree includes a new course on ‘Management and innovation of e-business’. The course is at the cutting edge of knowledge on the subject.”

BSc International Development

Programme overview



'The field of International Development is the attempt to understand and to shape processes of social and economic change in order to

reduce poverty and to create a better life for poorer people, and the countries where they live. It combines social science approaches from disciplines such as economics, politics, sociology and demography. It also requires an understanding of global processes of economics and politics as well as more local, national, and sub-national processes. Typical themes of International Development include poverty alleviation, economic growth; aid and assistance; the management of local and global environmental problems and the political economy of social change.'

Professor Tim Forsyth

Programme specifics

Where can it lead?

- A range of careers including international organisations such as the UN, aid agencies and NGOs, and for the private sector. Careers can also include economic planning, rural development, humanitarianism, poverty reduction, and working to provide public services and environmental protection.

Features of the degree

- A wide-ranging training in diverse social science skills, and in the subject matter of international development.
- You will gain experience in themes of economic, political and social analysis, as well as related fields through optional courses.
- The degree connects different approaches to development and addresses real-world problems relating to economic growth, politics, humanitarianism, poverty, environment and governance in poorer countries.

"The International Programmes not only gave me the opportunity to study at my own rhythm alongside my job, it offered me the chance to learn from the ISE teachers who provide very high quality courses."

Malorie Cornier,
BSc International Development,
France

Since graduating from the BSc International Development, Malorie has moved to New York to pursue her career ambitions.



Standard Route

100 courses

- 1 DV1171 Introduction to international development
- 2, 3, 4 **Three courses** chosen from:
 - EC1002 Introduction to economics
 - GY1009 Human geography
 - IR1011 Introduction to international relations
 - SC1179 Contemporary sociology in a global age
 - ST104A Statistics 1 (half course) and
 - MT105A Mathematics 1 (half course)

200 and 300 courses

- 5 DV3165 Development management
- 6 GY2109 Geographies of development
- 7, 8 **Two courses** chosen from:
 - DV2169 Economic policy analysis in international development
 - EC2065 Macroeconomics
 - EC2066 Microeconomics
 - GY2164 Economic geography
 - IR3026 International political economy
 - SC3160 Population and society
- 9, 10 **Two courses** chosen from:
 - EC3044 Economics of development
 - DV3162 Complex emergencies and humanitarian responses
 - DV3166 Global environmental problems and politics
- 11 One 300 course from Selection groups D, E, G, IR or S
- 12 One course (or two half courses) from any Selection group

Graduate Entry Route

100 courses

- 1 DV1171 Introduction to international development
- 2, 3, 4 **Three courses** chosen from:
 - EC1002 Introduction to economics
 - GY1009 Human geography
 - IR1011 Introduction to international relations
 - SC1179 Contemporary sociology in a global age
 - ST104A Statistics 1 (half course) and
 - MT105A Mathematics 1 (half course)

200 and 300 courses

- 5 DV3165 Development management
- 6 GY2109 Geographies of development
- 7, 8 **Two courses** chosen from:
 - DV2169 Economic policy analysis in international development
 - EC2065 Macroeconomics
 - EC2066 Microeconomics
 - GY2164 Economic geography
 - IR3026 International political economy
 - SC3160 Population and society
- 9 EC3044 Economics of development **or** DV3162 Complex emergencies and humanitarian responses **or** DV3166 Global environmental problems and politics

BSc International Relations

Programme overview



‘International Relations started out as the study of an international system composed first and foremost by nation-states. Today, the

discipline considers the role not only of states but also of a wide range of international actors, from international organisations to multinational corporations, and from civil society groups to terrorist networks. At its heart are questions concerning war and peace, international order and stability, and the forces that produce change in the international system. In an era of economic globalisation, International Relations is also concerned with the close links between international politics and the global economy, and whether globalisation is producing a more integrated or more fragmented world.’

Dr Robert Falkner

Programme specifics

Where can it lead?

- A range of careers including government, international organisations, business and the media.

Features of the degree

- Provides a critical understanding of the core literature and main theoretical debates in the field of international relations.
- You study the same compulsory 200 and 300 courses as students at LSE.
- A framework for understanding the international aspects of problems such as environmental degradation, the globalising of economy, development and human rights, which are recognised to be of increasing importance in the 21st century.

‘I chose International Relations because I wanted an education that would transform my mind. No other discipline brings events of the past, present and future into personal relevance so powerfully while inculcating leadership and moral values within it. SIM GE has provided me a structure to pursue internship opportunities and contribute to the student body.’

Isaac Liu, BSc International Relations, Singapore

Isaac is studying for his BSc in International Relations at SIM GE. See his recent contribution to our London Connection magazine: bit.ly/isaac-liu



Standard Route

100 courses

- 1 IR1011 Introduction to international relations
- 2 PS1130 Introduction to modern political thought or PS1172 Introduction to political science
- 3 One 100 course (or two half courses) from Selection group F1
- 4 One 100 course (or two half courses) from Selection groups F1 or F2

200 and 300 courses

- 5 IR3026 International political economy
- 6 IR3083 International political theory
- 7 IR2085 International organisations
- 8 IR2137 Foreign policy analysis
- 9 IR3140 Security and international relations
- 10 One 300 course from Selection groups IR or P
- 11 One course (or two half courses) from Selection groups E, IR, P or S
- 12 One 100, 200 or 300 course (or two half courses) from any Selection group

Graduate Entry Route

100 courses

- 1 IR1011 Introduction to international relations
- 2 PS1130 Introduction to modern political thought or PS1172 Introduction to political science
- 3 One 100 course (or two half courses) from Selection group F1
- 4 One 100 course (or two half courses) from Selection groups F1 or F2

200 and 300 courses

- 5 IR3026 International political economy
- 6 IR3083 International political theory
- 7 IR2085 International organisations
- 8 IR2137 Foreign policy analysis
- 9 IR3140 Security in international relations



Professor Martin Anthony

Department of
Mathematics, LSE

'Given this is a combined programme in Maths and Economics, there are obvious career opportunities in finance and related areas. It's also a good preparation for Masters programmes.

It's still the case, I think, that most graduate jobs aren't too specific about what degree they want. Employers want bright people who can solve problems. What matters, for many jobs, is that you have a quantitative degree from a good university, and that it's a good class of degree.

The reason a degree like this is attractive to employers is because what you learn when you study maths is a way of thinking, a way of modelling problems. And that's particularly true in a combined degree like this where you're not just doing pure maths but you're doing some economic modelling.'

Professor Anthony was one of eight winners in the Student Led Teaching Awards 2014, organised by the Students' Union at LSE.

“What matters, for many jobs, is that you have a quantitative degree from a good university, and that it's a good class of degree.”

BSc Mathematics and Economics

Programme overview



'This degree focuses on how mathematics and economics connect and interact. You will not only acquire technical skills, but also powers of analysis. The ability to think analytically will enable you to adapt to new developments in your chosen career. We believe that the combination of mathematics and economics instils such ability. You will be able to understand how rigorous proofs can be given in mathematics, and see how the theories developed can be used in an economics context. The general skills you will gain will enable you to proceed to a successful career in many fields. In this course, you will learn how formal mathematics is done: why it is important to have precise definitions, and how results can be proved and techniques justified.'

Professor Martin Anthony

Programme specifics

Where can it lead?

- A range of careers including finance, business, management, accounting, and professional or managerial careers, particularly in areas requiring the application of quantitative skills (e.g. forecasting and risk).

Features of the degree

- A thorough programme providing an understanding in advanced areas of mathematics, carefully structured so that these topics fit well with the economics topics.
- The 100 courses which you take first have slightly more mathematical and statistical topics because these have to be studied before their application in the economics courses.
- There is some flexibility in the choice of papers you take as 200 and 300 courses, but generally, about half of your papers will be related to economics, and half to mathematics.

"Studying has been extremely challenging but at the same time very rewarding. My result in the Finance and Valuation course was particularly pleasing as it is relevant to my career. Completing the degree has opened opportunities to gain experience of more quantitative and strategic aspects of our business."

Fuad Ahmed, BSc Mathematics and Economics, United Kingdom

Fuad is currently working in the investment management department of a life insurance company.



Standard Route

100 courses

- 1 EC1002 Introduction to economics
- 2 ST104A Statistics 1 (half course) **and** ST104B Statistics 2 (half course)
- 3 MT1173 Algebra
- 4 MT1174 Calculus

200 and 300 courses

- 5 EC2065 Macroeconomics
- 6 EC2066 Microeconomics
- 7 MT2116 Abstract mathematics
- 8 MT2176 Further calculus (half course) **and** MT2175 Further linear algebra (half course)
- 9 One course from the following:
 - EC3044 Economics of development
 - EC2020 Elements of econometrics
 - EC3015 Economics of labour
 - EC3016 International economics
 - EC3022 Public economics
 - EC3099 Industrial economics
 - EC3115 Monetary economics
 - EC3120 Mathematical economics
 - IR3026 International political economy
- 10 One 300 course (or two half courses) from Selection group N
- 11 One 300 course from Selection group E
- 12 One 300 course (or two half courses) from Selection groups E or N

Additional information

Applicants applying to the BSc Mathematics and Economics degree must demonstrate competence in Mathematics at least equivalent to UK GCE 'A' level at Grade E or above.

BSc Politics and International Relations

Programme overview



'This degree enables you to combine a study of both politics and international relations. How political power is distributed

and organised within the state and between states is central to this specialism. International relations is concerned with the behaviour of states and their relations with each other. It considers some of the great issues of international society, such as the causes of war and the conditions of peace. But it also concerns international economic relations and such questions as globalisation: its advantages and disadvantages. I have been involved in the International Programmes for many years and my particular interests are international organisations, especially the UN system and the European Union.'

Dr Eiko Thielemann

Programme specifics

Where can it lead?

- A range of careers including business, journalism and media, the civil service, the public sector and international organisations.

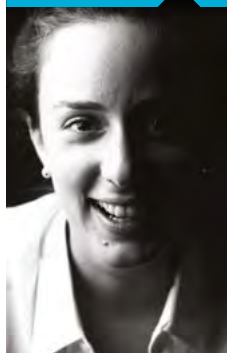
Features of the degree

- You will study various types of regime, the institutions of representative and responsible government, the process of politics and the forming and implementation of public policy.
- You will analyse political relationships in the economic and social context and take into account historical influences on contemporary politics.
- You will focus on the changing nature of international society and the principles of international order and justice in the post-Cold War period.
- You will learn to analyse detailed social and political data and to form balanced judgements.

"A degree in Politics and International Relations is a well-respected one. It gives you a background and general knowledge which you can later use in so many different spheres. And the programme offered by the University of London is really interesting and up-to-date."

Mariam Tokhadze
BSc Politics and International Relations, Georgia

Mariam works for the Ministry of Defence in Georgia as a Chief Specialist in the Defence Policy and Planning Department. Read more in our online magazine, London Connection: bit.ly/lc-mariamtokhadze



Standard Route

100 courses

- 1 IR1011 Introduction to international relations
- 2 PS1130 Introduction to modern political thought or PS1172 Introduction to political science
- 3 One course (or two half courses) from Selection group F1
- 4 One course (or two half courses) from Selection group F1

200 and 300 courses

- 5 PS2082 Comparative politics
- 6 IR3083 International political theory
- 7 IR2084 Nationalism and international relations
- 8 PS3086 Democracy and democratisation
- 9 One 300 course from Selection groups IR or P
- 10 One course (or two half courses) from Selection groups E, IR, P or S
- 11 One course (or two half courses) from Selection groups E, IR, P or S
- 12 One 100, 200 or 300 course (or two half courses) from any Selection group

Graduate Entry Route

100 courses

- 1 IR1011 Introduction to international relations
- 2 PS1130 Introduction to modern political thought or PS1172 Introduction to political science
- 3 One course (or two half courses) from Selection group F1

200 and 300 courses

- 4 PS2082 Comparative politics
- 5 IR3083 International political theory
- 6 IR2084 Nationalism and international relations
- 7 PS3086 Democracy and democratisation
- 8 One 300 course from Selection groups IR or P
- 9 One 100, 200 or 300 course (or two half courses) from Selection groups E, F1, IR, P or S



Professor Paul Kelly

Pro-Director (Teaching and Learning), LSE

'I wrote the study guide for Introduction to modern political thought, which is one of the required first year courses on the Politics and International Relations programme. It gives students a broad and general theoretical framework within which a lot of more recent real world politics fits.

In structuring the study guide, you try and give a clear indication to the student how they should deal with the material, what is the process of note-taking, revision, how do they read? We find that our students go into all manner of jobs including the civil service, public affairs, NGOs, teaching, political lobbying and journalism. The range is quite extraordinary.

Different courses on our programmes will give you different kinds of skills. In a course like mine, which is about reading texts, it's the ability to critically analyse arguments. That's a very general thing, but it's a hugely valuable skill in almost any advanced career.'

“We find that our students go into all manner of jobs including the civil service, public affairs, NGOs, teaching, political lobbying and journalism.”

Joint Laws programmes



Additional resources for law courses only

If you register for a law course, in addition to subject guides and past examination papers you also receive:

- Studying English law with the University of London (an introductory guide to the basics of common law legal systems).
- Study packs containing key readings for all the core subjects and selected options.
- Learning skills for law containing advice on study skills, developing English language and legal English skills, reading cases and statutes and guidance on examination technique.
- Recent developments in law, to make sure that you are up to date with developments in each subject

as of February of the current year and are given details of any new editions of textbooks.

Pre-course exercises

These exercises offer a 'taster' so that you can try out the type of skills you will be expected to develop as you go through the Laws programme.

Student Portal

The Student Portal allows you to access the VLE for laws students, which provides a centralised location for accessing many resources and hosts:

- Law subject pages with news and updates, provided by legal academics associated with the Laws programme

- discussion forums where you can debate the finer points of your subjects
- full-text versions of subject guides and other study materials
- facilities for you to set up your own profile pages
- links from the VLE take you to the Online Library, programme resources and key external sites.

You can also access online legal research exercises. These build on your ability to find primary and secondary legal materials using electronic sources, as well as hard copy/paper sources in libraries, and to conduct legal research more generally.



Andrea Salvador

BSc Management with Law,
Trinidad & Tobago



'This route (Management with Law) was not originally planned, but I am truly satisfied that I found it. The degree programme meant that I could work and study and become better qualified. Embarking upon a Management with Law qualification has made me a better HR professional and business partner.'

Andrea is using her University of London qualification to further her career in HR.

“The degree programme meant that I could work and study and become better qualified.”

BSc Accounting with Law

Programme overview

This degree aims to set the study of accounting, finance and law in a broader social science framework. Understanding the theory and practice of financial management, control and accountability in organisations is central to this specialism. You will develop an understanding of how accounting and finance as a discipline is central to the way in which management internally, and also various stakeholders externally (investors, lenders, customers, the government and the public) perceive, understand, and seek to change and control the nature of organisations and the ways in which resources are allocated to and by them.

Programme specifics

Where can it lead?

This degree is for you if you:

- wish to pursue a career in accounting
- would like to work in areas of commerce such as insurance banking, sales and marketing
- are considering working as a company secretary.

Features of the degree

- This degree will help you to develop the skills needed to think critically.
- It takes a broad approach to the subjects rather than focusing on narrow technicalities.
- You will need to undertake further study if you wish to qualify as an accountant.
- During the course of your law studies you will undertake research exercises online and make extensive use of online and physical library resources.
- It will provide you with a good background in both accounting and law.

Standard Route

100 courses

- 1 AC1025 Principles of accounting
- 2 LA1040 Contract law
- 3 LA1031 Legal system and method
- 4 One course (or two half courses) from Selection group F1

200 and 300 courses

- 5 LA2017 Commercial law
- 6 LA3021 Company law
- 7 AC3059 Financial management **or** FN3092 Corporate finance
- 8 AC3091 Financial reporting
- 9 AC3093 Auditing and assurance
- 10 AC3097 Management accounting
- 11 One 200 or 300 course (or two half courses) from any Selection group
- 12 One course (or two half courses) from Selection groups F1, F2, L or M

Graduate Entry Route

100 courses

- 1 AC1025 Principles of accounting
- 2 LA1040 Contract law

200 and 300 courses

- 3 LA2017 Commercial law
- 4 LA3021 Company law
- 5 AC3059 Financial management
- 6 AC3091 Financial reporting
- 7 AC3093 Auditing and assurance
- 8 AC3097 Management accounting
- 9 One course (or two half courses) from Selection groups F1, F2, L or M

Additional information

An additional fee is payable for law courses. Please see page 53 for details.

BSc Management with Law

Programme overview

This degree aims to set the study of management and law in a broader social science framework. The management courses will enable you to develop an understanding of a range of issues in international management, while allowing you to learn from examples relevant to your local environment. An in-depth study of law applicable to the commercial sector and the development of a critical awareness of the common law legal tradition are both central to this specialism.

Programme specifics

Where can it lead?

- Students who wish to pursue a career in management.
- The combination of management and law will equip you to work in both public and private sectors where a demonstrated ability for logical reasoning is required.
- It is particularly useful if you want to pursue a career in the management of a legal practice.

Features of the degree

- The management courses have been designed with a strong emphasis on social science theory and practice, which should be relevant to your experiences and local environment.
- Both the law and management subjects will provide you with a knowledge and understanding of a wide range of issues in international management.
- It is an intellectually demanding degree as there are two disparate disciplines involved.
- During the course of your law studies you will undertake research exercises online and make extensive use of online and physical library resources.

Standard Route

100 courses

1	AC1025 Principles of accounting
2	LA1040 Contract law
3	LA1031 Legal system and method
4	MN1178 Business and management in a global context

200 and 300 courses

5	LA2017 Commercial law
6	LA3021 Company law
7	MN2177 Core management concepts
8	One 300 course from Selection group M
9	One 300 course from Selection group M
10	One 200 or 300 course from Selection group M
11	One 200 or 300 course (or two half courses) from any Selection group
12	One 100, 200 or 300 course (or two half courses) from any Selection group

Graduate Entry Route

100 courses

1	AC1025 Principles of accounting
2	LA1040 Contract law
3	MN1178 Business and management in a global context

200 and 300 courses

4	LA2017 Commercial law
5	LA3021 Company law
6	MN2177 Core management concepts
7	One 300 course from Selection group M
8	One 300 course from Selection group M
9	One 200 or 300 course from Selection group M

Additional information

An additional fee is payable for law courses. Please see page 53 for details.

Graduate Diplomas

Who are they for?

The Graduate Diplomas (formerly known as Diplomas for Graduates) enable you to extend either the depth or range of your previous undergraduate study. The Diplomas are comprised largely of honours-level courses drawn from the undergraduate Economics, Management, Finance and Social Sciences syllabus. Specifically, they are aimed at graduates who wish to:

- acquire and demonstrate vocational skills in a particular field in the workplace and beyond or
- use the Diploma as a basis for progression into postgraduate study and whose first degree is in an unrelated field or
- gain a stronger basis for entry to postgraduate study at a university and whose first degree may not be readily acceptable as equivalent to a good UK honours degree.

Features

As well as developing subject-specific skills, Graduate Diplomas enable you to question and analyse information, develop arguments, and bolster your analytical and communicative competence.

Entry to Masters programmes is competitive, and at the discretion of each admitting university, so you should confirm with the relevant university whether the Graduate Diploma is acceptable for entry and, if so, what mark is needed.

When honours-level courses are taken as part of a bachelors degree, you will normally be familiar with the subject matter through having taken prerequisite courses earlier in the degree. While graduates are permitted to register for these awards without taking the prerequisites, you should be prepared for the difficulty of the courses. For example, you are advised to have a firm grasp, at undergraduate level, of mathematics or economics before embarking on honours-level courses in these subjects.

Structures

Each Graduate Diploma is made up of four courses, which can be taken in any order (there are no prerequisites). You have between one and five years to complete the programme.

- You are advised to have a firm grasp, at undergraduate level, of mathematics or economics before embarking on honours-level courses in these subjects.
- If you hold a professional qualification and/or postgraduate qualification without a full first degree, you cannot be considered for admission to a Graduate Diploma.
- If you apply for the Graduate Diploma in Mathematics you are advised that, although not a formal entrance requirement, it is your responsibility to ensure that before you start this programme your mathematics is already at least at the standard of a first year undergraduate degree in mathematics and includes multivariate calculus.
- If you apply for the Graduate Diploma in International Relations you are exempt from the requirement to demonstrate competence in Mathematics. If you wish to transfer from this programme to another Graduate Diploma at a later stage, however, you will be required to demonstrate competence in Mathematics as described.

Lusine Aslanyan

Diploma for Graduates
in Finance, Singapore



'I consider this programme as a base for everyone who wants to build his/her career in the financial and banking sectors. I want to thank the University of London for giving me the chance to study at one of the best universities in the world.'

Having earned her Diploma for Graduates in Finance, Lusine continues to work in the financial sector.

"I want to thank the University of London for giving me the chance to study at one of the best universities in the world."



Further information

Entrance requirements

You must:

- hold an acceptable bachelor degree **or**
- an acceptable Masters degree (or any other acceptable/ appropriately accredited Level 7 award) provided this is at least one year full time in duration; **or**
- an acceptable Level 5 or Level 6 award (such as an HND or Graduate Certificate) provided this is at least one year full time in duration. In addition applicants must submit evidence of at least two years relevant work experience
- furthermore all applicants must demonstrate competence in Mathematics at least equivalent to UK GCSE/GCE O level at Grade C or above* **and**
- meet our English language requirement. We may require a test of proficiency in English

* Applicants applying to the Graduate Diploma in Mathematics must demonstrate competence in Mathematics at least equivalent to UK GCE A level at Grade E or above.

Applicants applying to the Graduate Diploma in International Relations are not required to demonstrate competence in Mathematics.

For full details on how to meet our entrance requirements, including further information on our General Entrance Requirements, UK GCSE/ GCE O level equivalents, UK GCE A level equivalents and English language requirements you should visit: londoninternational.ac.uk/courses/search

Classification

You must pass four full courses to be awarded the Graduate Diploma. One resit may be attempted for any course failed. Graduate Diplomas will be classified as Distinction, Merit or Pass. A student who has failed a course twice or two courses once is eligible for a Pass grade only.

Transfer

You will not be permitted to transfer from the Graduate Diploma to the related BSc or other degrees or to other qualifications offered through the International Programmes. You may transfer between the different Graduate Diplomas. A student who fails a course twice may change to another course, within the five-year registration period, provided that the failed course is not compulsory on the Graduate Diploma to which they wish to transfer.

Please note: there is no APL offered for any course on the Graduate Diploma programmes.



Graduate Diploma structures

Additional information

All structures listed will be subject to confirmation in the 2016–2017 Programme regulations. The Programme regulations also contain full details on the rules that govern the choice of any course, please see: londoninternational.ac.uk/regs
Selection groups are listed on pages 48–50.

Accounting

One compulsory course

AC1025 Principles of accounting

Two courses chosen from:

AC3059 Financial management **or**
FN3092 Corporate finance

AC3091 Financial reporting

AC3093 Auditing and assurance

AC3097 Management accounting

AC3143 Valuations and securities analysis

Plus

One 200 or 300 course (or two half courses) chosen from any Selection group, including any course not selected above.

Banking

One compulsory course

FN1024 Principles of banking and finance

Two courses chosen from:

AC3059 Financial management **or**
FN3092 Corporate finance

AC3091 Financial reporting

AC3093 Auditing and assurance

AC3143 Valuation and securities analysis

FN2029 Financial intermediation

FN3023 Investment management

FN3142 Quantitative finance

Plus

One 200 or 300 course (or two half courses) chosen from any Selection group including any course not selected above.

Economics

Three compulsory courses

EC2020 Elements of econometrics

EC2065 Macroeconomics

EC2066 Microeconomics

Plus

One 300 course with the prefix EC chosen from Selection group E.

Finance

One compulsory course

FN3092 Corporate finance

Two courses chosen from:

AC3091 Financial reporting

AC3093 Auditing and assurance

AC3143 Valuation and securities analysis

FN2029 Financial intermediation

FN3023 Investment management

FN3142 Quantitative finance

Plus

One 200 or 300 course from any Selection group.

Information Systems

Three compulsory courses

IS2062 Information systems development and management

IS2138 Information and communication technologies: principles and perspectives

IS3159 Research project in information systems

One course chosen from:

IS1060 Introduction to information systems **or**

IS2136 Information systems and organisations

IS3139 Software engineering: theory and application

IS1168 Introduction to computer systems architecture and programming

International Development
One compulsory course
DV1171 Introduction to international development
Two courses chosen from: (at least one of which must be a 300 course with prefix DV)
DV3162 Complex emergencies and humanitarian responses
DV3165 Development management
DV3166 Global environmental problems and politics
DV2169 Economic policy analysis in international development or
EC3044 Economics of Development
GY2109 Geographies of development
GY2164 Economic geography
SC3057 Social policy
SC3160 Population and society
Plus
One 300 course (or two half courses) chosen from any Selection group, including any course not selected above.

International Relations
Three courses chosen from: (at least one of which must be a 300 course)
IR1011 Introduction to international relations
IR2084 Nationalism and international relations
IR2085 International organisations
IR2137 Foreign policy analysis
IR3026 International political economy
IR3083 International political theory
IR3140 Security and international relations
Plus
One 300 course (or two half courses) chosen from any Selection group, including any course not selected above.

Management
Two compulsory courses
MN1178 Business and management in a global context
MN2177 Core management concepts
Two courses chosen from:
MN3032 Management science methods
MN3075 Human resource management
MN3119 Strategy
MN3127 Organisation theory: an interdisciplinary approach
MN3141 Principles of marketing

Mathematics
One compulsory course and two compulsory half courses
MT2116 Abstract mathematics
MT2175 Further linear algebra (half course)
MT2176 Further calculus (half course)
The equivalent of two full courses chosen from:
MT3040 Game theory (half course)
MT3041 Advanced mathematical analysis (half course)
MT3042 Optimisation theory (half course)
MT3043 Mathematics of finance and valuation (half course)
MT3170 Discrete mathematics and algebra (full course)
ST3133 Advanced statistics: distribution theory (half course)
ST3134 Advanced statistics: statistical inference (half course)

Politics
Three courses chosen from:
PS1130 Introduction to modern political thought or
PS1172 Introduction to political science
PS2082 Comparative politics
PS3086 Democracy and democratisation
PS3088 Politics and policies of the European Union
PS3108 Political analysis and public choice
Plus
One 200 or 300 course (or two half courses) chosen from any Selection group, including any course not selected above.

Social Sciences
Four full courses (or equivalent) chosen from any of the Selection groups: (at least one of which must be a 300 course)
Notes:
You may not choose more than one 100 course (or two half courses) from Selection groups F1 or F2
You may take no more than two courses from Selection group L.

Sociology
Two compulsory courses:
SC2145 Social research methods
SC2163 Sociological theory and analysis
Plus
One 300 course with the prefix SC chosen from Selection group S
Plus
One course (or two half courses) chosen from any Selection group.

Certificate of Higher Education in Social Sciences (CHESS)



The Certificate of Higher Education in Social Sciences (CHESS) is a qualification in its own right that must be studied at an institution with permission to teach the programme. Please see 'Additional educational support' on pages 45–47 for further information.

This qualification is for you if you:

- have the ability, motivation and maturity to study at degree level, but do not have the qualifications usually required to enter a degree programme
- have the necessary qualifications to embark on a degree, but would prefer a course with more teaching support
- intend to take a degree programme, but would like to gain a recognised qualification after one year.

An entry route to degree study

If you do not have A levels or their equivalent, the CHESS provides an entry route to all of the degrees in the fields of Economics, Management, Finance and the Social Sciences listed in this prospectus.

If you intend to go on to a degree programme listed in this prospectus, choose your courses carefully and make sure that the courses you choose are available on the degree that interests you.

This will ensure that you receive credit for the courses you have passed. You can transfer to one of the degrees listed in this prospectus after attempting four courses and passing three full courses of the CHESS.

Features of the CHESS

- You take the same 100 courses as those offered to degree students.
- You must be registered with a teaching institution with permission to teach the programme. You cannot study independently for this qualification.
- You can complete the CHESS in a minimum of one year and a maximum of five.
- You sit your examinations in May/June.
- You must pass all four courses in order to be awarded the CHESS.

Are you eligible?

To be eligible for the CHESS you must:

- normally* be aged 18 or above by the 31 December in the year of registration and
- have four GCSE/O levels at grades A–C and one GCE/A level at grades A–E, or six GCSE/O levels at grades A–C, or equivalent **and**
- demonstrate competence in Mathematics at least equivalent to UK GCSE/GCE O level at Grade C or above **and**
- meet our English language requirement. We may require a test of proficiency in English **and**
- have been admitted to a full or part-time course of instruction at an institution which is recognised to teach the Certificate.

*Applications will be considered from applicants who do not meet the normal minimum age requirement for admission. Each application will be considered on an individual basis, and the decision taken at the discretion of the University of London.

In addition to the above, many institutions who are recognised to teach the programme have their own admission criteria. For further details (including fees, entrance requirements and application deadlines) or to apply, please contact your local institution directly.

A directory of institutions can be found at: londoninternational.ac.uk/online-search/institutions

For full details on how to meet our entrance requirements, including further information on our General Entrance Requirements, UK GCSE/GCE O level equivalents, UK GCE A level equivalents, and English language requirements you should visit: londoninternational.ac.uk/courses/search

Further information

- There are a number of universities in the UK, including LSE, that will consider you for entry into the second year of a degree if you pass the CHES with very high marks and have taken the appropriate courses (see page 52). To be considered for a place, you will need to apply through UCAS, stating that you are applying for second-year entry.
- The CHES is awarded with a grading of Distinction, Merit, Credit or Pass.
- You should expect your studies to take 35–40 hours per week.
- You must attend lectures and tutorials regularly and are expected to write assignments, and while these do not count towards your final assessment you are required to complete them before you can enter for the examinations.

Certificate of Higher Education in Social Sciences

Four full courses (or half course equivalents) to be chosen from the following:

AC1025	Principles of accounting
DV1171	Introduction to international development
EC1002	Introduction to economics ⁽¹⁾
FN1024	Principles of banking and finance
GY1009	Human geography
IR1011	Introduction to international relations
IR1034	World history since 1945
IS1060	Introduction to information systems
IS1168	Introduction to computer systems architecture and programming
MN1178	Business and management in a global context
MT105A	Mathematics 1 (half course)
MT105B	Mathematics 2 (half course) ⁽²⁾
MT1173	Algebra
MT1174	Calculus
PS1130	Introduction to modern political thought
PS1172	Introduction to political science
SC1179	Contemporary sociology in a global age
SC1185	Reading social science
ST104A	Statistics 1 (half course)
ST104B	Statistics 2 (half course) ⁽³⁾
LA1010	Criminal law ♦
LA1020	Public law ♦
LA1031	Legal system and method ♦
LA1040	Contract law ♦

Additional information

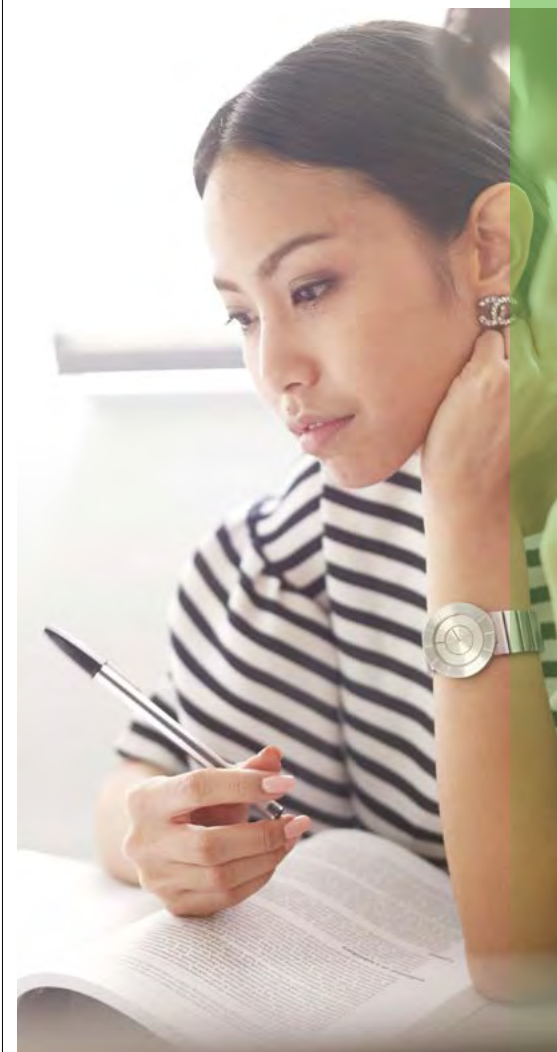
⁽¹⁾ EC1002 can only be taken at the same time or after MT105A and ST104A

⁽²⁾ MT105B can only be taken at the same time or after MT105A

⁽³⁾ ST104B can only be taken at the same time or after ST104A

♦ Students can take a maximum of two of these courses.

Students should note that their course selection will be subject to availability and not all courses will necessarily be available at their chosen teaching institutions.





Additional educational support



Student choice

We aim to give our students as much choice as possible about how, when and where they study. Some prefer the flexibility of being able to study independently, at their own pace, using our study materials. Others prefer the benefits of face-to-face teaching and classroom support, and choose to pay for additional educational support at a local independent institution.

We currently work with a growing network of 70-plus independent teaching institutions worldwide that provide tuition support for our students. We refer to these institutions as recognised centres and there are two categories: Affiliate Centres have demonstrated a sustained commitment to the quality of teaching, support and administration; Registered Centres have demonstrated acceptable standards for the purpose of supporting International Programmes students in preparing for examinations.

The Certificate of Higher Education in Social Sciences (CHESS) may be studied either full time or part time. Students must have registered through, and be studying at, a teaching institution that has been recognised for teaching this award by the University of London.

In the following list, institutions that are recognised for teaching the CHESS are marked:

CERTIFICATE TEACHING STATUS

For details about recognised centres please visit: apps.londoninternational.ac.uk/online-search/institutions

The directory also provides details of those teaching institutions that have formally commenced the process for becoming recognised.

Bhagya Ratnayake

BSc Sociology with Law and
Diploma in Economics,
Sri Lanka



'In addition to the vast socio-legal exposure, the amount of knowledge I gathered on research, social policy and development was extremely helpful to develop my career. Most importantly, the degree made me a critical thinker, not to be a parrot or take things on face value. It taught me to become more analytical when dealing with literature, evidence, data, and policy.'

Bhagya is a Youth Employment Officer with the International Labour Organization, a specialized agency of the United Nations. Read a Q&A with Bhagya in our online magazine, London Connection: bit.ly/lc-bhagyaratnayake

“Most importantly, the degree made me a critical thinker, not to be a parrot or take things on face value.”

Additional educational support

Affiliate Centres

Hong Kong SAR

HKU School of Professional and Continuing Education (HKU SPACE)

CERTIFICATE TEACHING STATUS

hkuspace.hku.hk

India

Indian School of Business and Finance

CERTIFICATE TEACHING STATUS

New Delhi

isbf.edu.in

Russell Square International College

CERTIFICATE TEACHING STATUS

Mumbai,

rsicollege.org

Kazakhstan

Kazakh British Technical University (KBTU)/International School of Economics and Social Sciences (ISE)

kbtu.kz; ise.kz

Malaysia

HELP Academy SDN BHD

Kuala Lumpur

help.edu.my

HELP College of Arts and Technology

Kuala Lumpur

helpcat.edu.my

Malta

St Martin's Institute of Higher Education

CERTIFICATE TEACHING STATUS

stmartins.edu

Pakistan

Metropolitan International University College

CERTIFICATE TEACHING STATUS

Islamabad

miuc.com.pk

Roots College International DHA-Campus

CERTIFICATE TEACHING STATUS

Islamabad

rootsschool.edu.pk

The Millenium University College

CERTIFICATE TEACHING STATUS

Islamabad

tmuc.edu.pk

University College Lahore

CERTIFICATE TEACHING STATUS

Lahore

ucl.edu.pk

University College Lahore Business School Multan

Multan

ucl.edu.pk

Russia

International College of Economics and Finance (ICEF)

Moscow

icef.hse.ru

Singapore

Singapore Institute of Management Pte Ltd

CERTIFICATE TEACHING STATUS

simge.edu.sg

Sri Lanka

Royal Institute of Colombo

CERTIFICATE TEACHING STATUS

Colombo

ric.lk

Turkey

Istanbul Bilgi Universitesi

CERTIFICATE TEACHING STATUS

Istanbul

bilgi.edu.tr

Registered Centres

Argentina

AIE-Asociacion Internacional de Estudios

Buenos Aires

aiele.org

Bahrain

Bahrain Institute of Banking and Finance (BIBF)

bibf.com

Bangladesh

Dhaka Centre for Law and Economics (DCLE)

Dhaka

dclebd.com

Egypt

Arab Academy for Science, Technology & Maritime Transport, College of Management and Technology

CERTIFICATE TEACHING STATUS

Cairo

aast.edu/en/colleges/cmt_heliopolis/

Egyptian Banking Institute

Cairo

ebi.gov.eg

Greece

DEI College

Thessaloniki

dei.edu.gr

India

Podar World College

Mumbai

podarworldcollege.org

Malaysia

Crescendo International College

crescendo.edu.my

Seri Stamford College

stamford.edu.my

Pakistan

Bay View College

CERTIFICATE TEACHING STATUS

Karachi

bayviewhigh.edu.pk

L'Ecole for Advanced Studies

CERTIFICATE TEACHING STATUS

Karachi

lecole.edu.pk

University College of Islamabad

CERTIFICATE TEACHING STATUS

Islamabad

uci.edu.pk

Russia

Financial University under Russian Federation Government

Moscow

fa.ru/projects/london/Pages/default.aspx

Seychelles

University of Seychelles

unisey.ac.sc

Singapore

PSB Academy

CERTIFICATE TEACHING STATUS

psb-academy.edu.sg

SAA Global Education Centre

CERTIFICATE TEACHING STATUS

saage.edu.sg

Stansfield College

CERTIFICATE TEACHING STATUS

stansfield.edu.sg

Sri Lanka

Horizon Campus

horizoncampus.edu.lk

United Arab Emirates

Western International College

Ras Al Khaimah, U.A.E

wincedu.net

Vietnam

British University Vietnam

Hanoi

buv.edu.vn

Selection groups

Level 100 courses

Selection group F1	
AC1025	Principles of accounting
DV1171	Introduction to international development
EC1002	Introduction to economics*
FN1024	Principles of banking and finance
GY1009	Human geography
IR1011	Introduction to international relations
IR1034	World history since 1945
IS1060	Introduction to information systems
IS1168	Introduction to computer systems architecture and programming
MN1178	Business and management in a global context
MT105A	Mathematics 1 (half course)
MT105B	Mathematics 2** (half course)
MT1173	Algebra
MT1174	Calculus
PS1130	Introduction to modern political thought
PS1172	Introduction to political science
SC1179	Contemporary sociology in a global age
SC1185	Reading social science
ST104A	Statistics 1 (half course)
ST104B	Statistics 2*** (half course)

* EC1002 Introduction to economics must be taken with or after ST104A Statistics 1 and MT105A Mathematics 1

** MT105B Mathematics 2 must be taken with or after MT105A Mathematics 1.

*** ST104B Statistics 2 must be taken with or after ST104A Statistics 1.

Selection group F2	
LA1010	Criminal law
LA1020	Public law
LA1031	Legal system and method
LA1040	Contract law

Level 200 and 300 courses

Selection group A	
AC3059	Financial management or
FN3092	Corporate finance
AC3091	Financial reporting
AC3093	Auditing and assurance
AC3097	Management accounting
AC3143	Valuation and securities analysis
FN3142	Quantitative finance*

* FN3142 Quantitative finance must be taken with or after FN3092 Corporate finance.

Selection group B	
AC3091	Financial reporting
AC3093	Auditing and assurance
AC3143	Valuation and securities analysis
FN2029	Financial intermediation
FN3092	Corporate finance
FN3023	Investment management*
FN3142	Quantitative finance**

* FN3023 Investment management must be taken with or after FN3092 Corporate finance.

**FN3142 Quantitative finance must be taken with or after FN3092 Corporate finance.

Level 200 and 300 courses

Selection group D

DV2169	Economic policy analysis in international development
DV3162	Complex emergencies and humanitarian responses
DV3165	Development management
DV3166	Global environmental problems and politics
EC3044	Economics of development
GY2109	Geographies of development
SC3057	Social policy
SC3160	Population and society

Selection group E

EC2020	Elements of econometrics*
EC2065	Macroeconomics
EC2066	Microeconomics
EC2096	Economic history since 1900
EC3015	Economics of labour
EC3016	International economics
EC3022	Public economics
EC3044	Economics of development
EC3099	Industrial economics
EC3115	Monetary economics
EC3120	Mathematical economics
FN3092	Corporate finance
GY2164	Economic geography
IR3026	International political economy
MN3028	Managerial economics
MT3095	Further mathematics for economists

* EC2020 Elements of econometrics must be taken with or after ST104B Statistics 2 and MT105B Mathematics 2..

Selection group G

DV3162	Complex emergencies and humanitarian responses
DV3165	Development management
GY2109	Geographies of development
GY2164	Economic geography
SC3160	Population and society

Selection group IR

DV3162	Complex emergencies and humanitarian responses
DV3165	Development management
DV3166	Global environmental problems and politics
IR2084	Nationalism and international relations
IR2085	International organisations
IR2137	Foreign policy analysis
IR3026	International political economy
IR3083	International political theory
IR3140	Security in international relations

Selection group IS

IS2062	Information systems development and management
IS2136	Information systems and organisations
IS2138	Information and communication technologies: principles and perspectives
IS3139	Software engineering: theory and application
IS3159	Research project in information systems
IS3167	Management and innovation of e-business

Selection group I

LA2001	Tort law
LA2002	Equity and trusts
LA2008	Administrative law
LA2017	Commercial law
LA2019	Family law
LA2024	EU law
LA2029	International protection of Human Rights
LA3003	Property law
LA3004	Civil and criminal procedure
LA3005	Jurisprudence and legal theory
LA3007	Evidence
LA3013	Public international law
LA3014	Conflict of laws
LA3018	Labour law
LA3021	Company law
LA3025	Criminology
LA3026	Intellectual property
LA3028	Introduction to Islamic law

Selection groups

Level 200 and 300 courses

Selection group M	Selection group N	Selection group S
AC3059 Financial management or	MT2116 Abstract mathematics	LA3005 Jurisprudence and legal theory
FN3092 Corporate finance	MT2175 Further linear algebra (half course)	LA3025 Criminology
AC3097 Management accounting	MT2176 Further calculus (half course)	MN3127 Organisation theory: an interdisciplinary approach
DV3165 Development management	MT3040 Game theory (half course)	SC2145 Social research methods
IS2136 Information systems and organisations	MT3041 Advanced mathematical analysis (half course)	SC2163 Sociological theory and analysis
IS3167 Management and innovation of e-business	MT3042 Optimisation theory (half course)	SC3057 Social policy
MN2177 Core management concepts	MT3043 Mathematics of finance and valuation (half course)	SC3144 Historical sociology
MN3027 The law of business organisations	MT3170 Discrete mathematics and algebra	SC3160 Population and society
MN3028 Managerial economics	ST3133 Advanced statistics: distribution theory (half course)	SP2079 Elements of social and applied psychology
MN3032 Management science methods	ST3134 Advanced statistics: statistical inference (half course)	
MN3075 Human resource management		
MN3119 Strategy		
MN3127 Organisation theory: an interdisciplinary approach		
MN3141 Principles of marketing		
MT2076 Management mathematics		
SP2079 Elements of social and applied psychology		
	Selection group P	
	DV3162 Complex emergencies and humanitarian responses	
	DV3165 Development management	
	DV3166 Global environmental problems and politics	
	PS2082 Comparative politics	
	PS3086 Democracy and democratisation	
	PS3088 Politics and policies of the European Union	
	PS3108 Political analysis and public choice	

Application and registration process

Getting started

You must apply online at:
londoninternational.ac.uk/courses/search

If you intend to study at an institution then you are advised to contact them before submitting your application.

Please read the 'Guidance Notes for Applications' before you complete your application.

Stage 1

Submit your online application form and application fee. Please note the application fee is non-refundable.

Stage 2

Submit your documentary evidence. This can be done online when submitting your application or at a later stage. Please see: londoninternational.ac.uk/applications-admissions/how-apply/documentary-evidence

Please do not send original documents.

Stage 3

We will contact you by **email** with one of the following:

Offer Letter: if you meet our entrance requirements and we have seen all required documentation then we will send you an Offer Letter.

Request for further information: we might require further documentation/information before we can confirm if you meet our entrance requirements.

We have referred your application to The Admissions Panel: if you do not automatically meet our entrance requirements then we will refer your application to The Admissions Panel for individual consideration. The Admissions Panel will consider qualifications which are not published under the Qualifications for Entrance Schedule, incomplete qualifications and substantial relevant work experience. If we cannot accept you with your current qualifications and experience then we will advise you on what qualifications you could take in order to meet our entrance requirements in the future.

Stage 4

Complete the online registration. We explain how to do this in the Offer Letter.

Stage 5

Start your studies. Once you register you will be given access to Virtual Learning Environment (VLE). We will also send you additional study materials to your correspondence address.

Hong Kong and Singapore

Applicants living in Hong Kong or Singapore can apply directly through:

The University of Hong Kong
School of Professional and Continuing Education (HKU SPACE)
University of London
International Programmes
Admissions Unit
3/F, Admiralty Centre
18 Harcourt Road
Hong Kong

RELC Examinations Bureau
30 Orange Grove Road
Level 3 RELC Building
Singapore 258352

Useful information for applicants

Submit your application even if you are waiting to sit an examination or to receive examination results. We can begin to process your application without all the evidence, although we will not be able to give you a final decision until all the necessary documentation has been received.

If you are unsure on whether or not you meet our entrance requirements then we might be able to advise you on this before you submit your online application. However, due to our increase in workload we are unable to provide this advice between 1 September and 30 October of each year.

Applications are valid for three years.



Transfer

Between programmes listed in this prospectus

The programmes listed in this prospectus have been designed to make it easy for you to transfer between them should you wish to.

If you are registered for one programme and realise that another would be better suited to you, then you may be able to transfer to that programme.

Please note that in some cases you will need to satisfy additional entrance requirements for the programme to which you wish to transfer (e.g. when transferring from the Graduate Diploma in International Relations to any other Graduate Diploma).

Students wishing to transfer to the BSc Mathematics and Economics or the Graduate Diploma in Mathematics, must have an A level in Mathematics or have passed at least one half course with an MT course code.

Full information and instructions on how to transfer between programmes are given in the Programme regulations.

Information on progressing from the CHESS to one of the degrees in Economics, Management, Finance and the Social Sciences is given on page 42.

To another programme we offer

It may also be possible to transfer to another programme within the International Programmes. This is not automatic, and you will need to satisfy any entrance requirements (both general and course specific) for the programme for which you wish to transfer (for example, when transferring from BSc Information Systems and Management to BSc Computing and Information Systems). You should also note that if you transfer to another programme (either listed in this prospectus or not) any outstanding fees will be payable.



To another College within the University of London

Registering as an International Programmes student with the University of London does not mean that you can automatically transfer at a later date and complete your studies at one of the Colleges of the University.

LSE, Queen Mary and Royal Holloway are three Colleges of the University that will consider you for entry into the second year of certain degree programmes.

If you are taking the CHESS, or four 100 courses of one of the degrees, you can be considered for second-year entry.

You cannot be considered for transfer into the final year. To be considered you will need to be taking courses whose syllabuses are similar to those taken at the Colleges concerned.

You will need to have been predicted to achieve very high marks in these courses and to have done well at school. You will be competing with many other applicants to all these Colleges for a limited number of places.

To another university in the UK or elsewhere

If you are thinking of transferring to another university in the UK, Australia, the USA, Canada or New Zealand we advise you to find out by October (a year before you hope to transfer) what the procedures are for making an application. Within the UK there are a number of universities who have departments that will consider you for entry to the second year of their degrees if you are taking the CHESS or four 100 courses of one of the degrees.

Other universities in the UK may consider applications from International Programmes students. You should contact the admissions officers of the university concerned in the first instance and direct them to the University of London website which lists all the necessary information about the programme.

To be considered for a place at a UK university you will need to apply through UCAS, stating that you are applying for second-year entry. Your local British Council office can advise you further. It is advisable to apply before the closing date in January and preferably well before this. If you study at a teaching institution your academic tutor will be able to advise you.

Fees

Fees payable to the University

Academic year 2016–2017	
Application fee (non-refundable)	£84
APL application fee (per course)	£89
APL application fee (per half course)	£45
Initial registration fee (BSc and Graduate Entry Route; CHESS)	£760
Initial registration fee (Graduate Diplomas)	£576
Continuing registration fee	£380
Examination fee per course	£224
Examination fee per half course	£112
Additional registration fee for students taking law courses (per course)	£51

Dates for 2016–2017 academic session

- The application handling fee is valid until the application closing date, 1 October 2016.
- The registration fee is valid until the registration closing date, 30 November 2016.
- The continuing registration fee is valid and payable between 1 March 2016 and 1 November 2016.
- The examination fees apply to students entering the 2017 examinations and are payable between 30 November 2016 and the examination entry deadline date, 1 February 2017.

Please note: fees are subject to annual review. The University reserves the right to amend previously announced fees, if necessary.

All fees must be paid in pounds sterling and can be paid online via the Student Portal using a credit/ debit card (Visa, MasterCard), by Western Union Quick Pay, banker's draft/cheque or international money/postal order, made payable to 'The University of London'.

How much will my programme cost?

Fees are subject to annual revision and typically may be increased by up to 5% per annum. The full list of annual fees for the programmes will be published on the Student Fees web page once confirmed, please visit: londoninternational.ac.uk/fees

Fee examples

As a guide, if you were to complete the Standard Route of a degree in the minimum amount of time (three years), and without resits, you should expect to pay between £4,292–£4,486.

If you were to complete the Graduate Entry Route of a degree in the minimum amount of time (two years), and without resits, you should expect to pay between £3,240–£3,314.

If you complete a Graduate Diploma in the minimum amount of time (one year), and without resits, you should expect to pay £1,556.

For the Certificate of Higher Education in Social Sciences, you should contact a local institution with permission to teach the programme for full details of their fees. The fees payable to the University in 2016–2017 if you complete the certificate in one year are £1,656.

Other costs

In addition to the fees payable to the University, you should also budget for the cost of:

- purchasing textbooks
- the cost of any course or tuition you choose to undertake at a teaching institution
- the fee levied by your local examination centre to cover their costs.

Financial assistance

Undergraduate UK students may be able to apply for a part-time tuition fee loan to cover the cost of your registration and examination entry fees.

For full details on eligibility criteria please visit: gov.uk/student-finance Alternatively some employers in both the public and private sector may be willing to consider offering financial assistance to their employees.

Students with disabilities

The University of London International Programmes welcomes applications from disabled students and/or those who have specific access requirements.

If you are disabled and/or have specific access requirements, we will make every reasonable effort to meet your needs.

This may include making special arrangements for examinations such as a separate room or special aids. If you would like to tell us about your disability and/or request special arrangements please complete the relevant section of the application form, or contact the Inclusive Practice Manager at: special.arrangements@london.ac.uk

Armed Forces

Students who are members or ex-members of the UK Armed Forces should note that the University of London has been approved by the Ministry of Defence in support of the Enhanced Learning Credits (ELC) Scheme (ELC Provider Reference Number 1284). The Scheme provides financial support to eligible Service personnel who wish to enhance their educational or vocational achievements. The ELC Administration Service website can be found at: enhancedlearningcredits.co.uk

Further information

Contact

If you have any questions that are not answered by this prospectus please contact:

The Student Advice Centre, University of London
Senate House, Malet Street
London WC1E 7HU, United Kingdom
Tel: +44 (0)20 7862 8360
enquiries.londoninternational.ac.uk

Study programmes 2016–2017

We offer a wide range of study programmes, from full degree programmes to certificates and individual courses/modules. For further information visit londoninternational.ac.uk/courses



Inclusive Practice Policy

We are fully committed to the consideration of applications from students with special examination arrangements. If you need to make a request (such as additional time or special aids) please contact the Inclusive Practice Manager for an application form at: special.arrangements@london.ac.uk

Complaints procedure

We aim to provide the highest quality service to our students. We endeavour to solve any problems you experience quickly and fairly. If, however, you wish to make a complaint our complaints procedure is published on our website and in our Student guide to the International Programmes and Programme handbooks.

While every effort has been made to ensure that the information contained in this prospectus is accurate at the date of publication (March 2016), all matters that it covers may be subject to change from time to time, both before and after a student has registered. In particular, information about the structure and content of programmes is subject to confirmation in the Programme regulations and registered students should refer to these. All fees are subject to annual review. The University does not intend by publication or distribution of this prospectus to create any contractual or other legal relation with applicants, registered students, their advisers or any other persons. You are strongly advised to check our website (londoninternational.ac.uk) for any revisions to this prospectus. We advise you to check local recognition criteria in your own country before applying for any qualification listed in this prospectus. This prospectus is issued free by the University of London.

Published by University of London
International Programmes
(Design, Editorial and Production).

Copyright © University of London, 2016.

For further information on the range of programmes we offer, please visit our website or contact us at:

The Student Advice Centre
University of London
Senate House
Malet Street
London WC1E 7HU
United Kingdom

Telephone +44 (0)20 7862 8360
enquiries.londoninternational.ac.uk

Follow us on:



[londoninternational.ac.uk/
youtube](http://londoninternational.ac.uk/youtube)



[londoninternational.ac.uk/
facebook](http://londoninternational.ac.uk/facebook)



[londoninternational.ac.uk/
twitter](http://londoninternational.ac.uk/twitter)



[londoninternational.ac.uk/
instagram](http://londoninternational.ac.uk/instagram)



[londoninternational.ac.uk/
linkedin](http://londoninternational.ac.uk/linkedin)



[londoninternational.ac.uk/
googleplus](http://londoninternational.ac.uk/googleplus)



[londoninternational.ac.uk/
flickr](http://londoninternational.ac.uk/flickr)



[londoninternational.ac.uk/
blog](http://londoninternational.ac.uk/blog)

londoninternational.ac.uk/lse